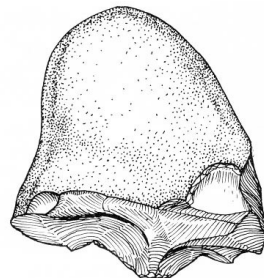
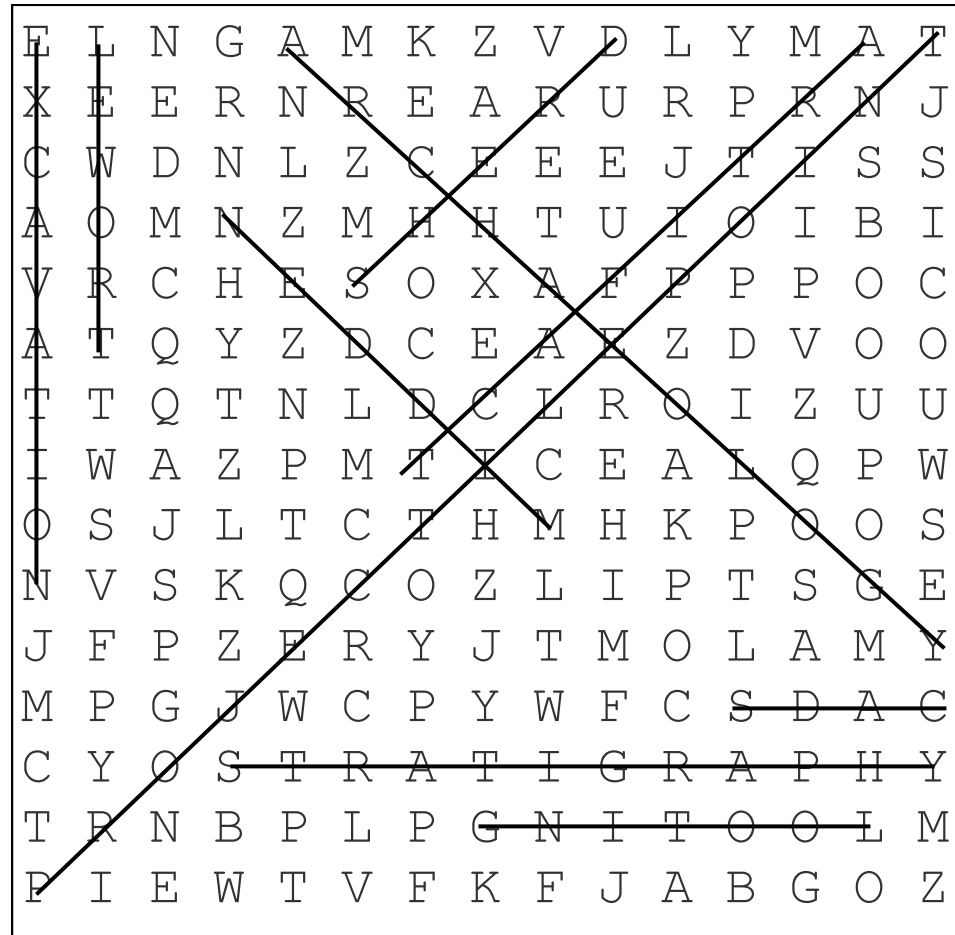


# Word Search



# Stratigraphy: Layers of Time

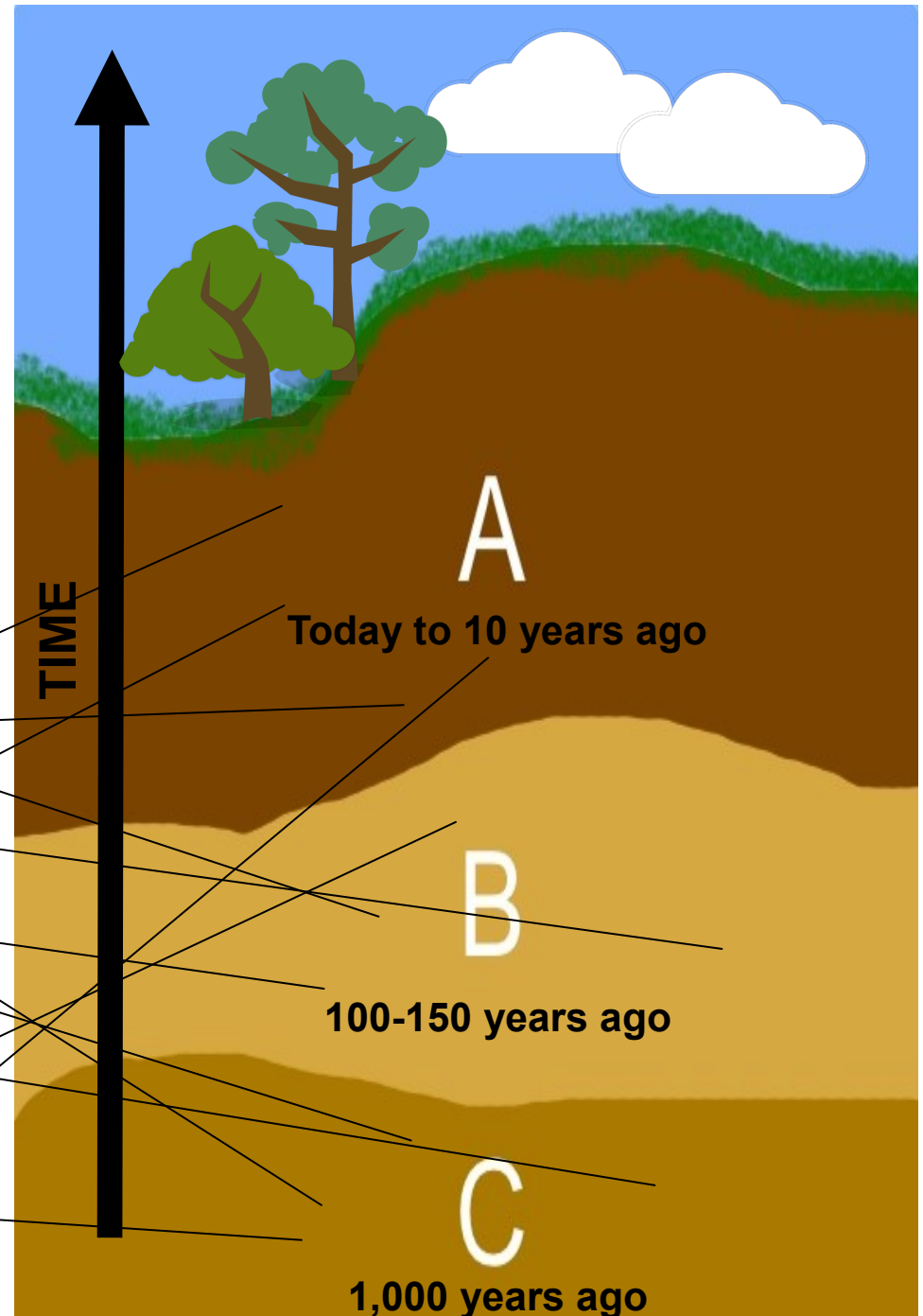
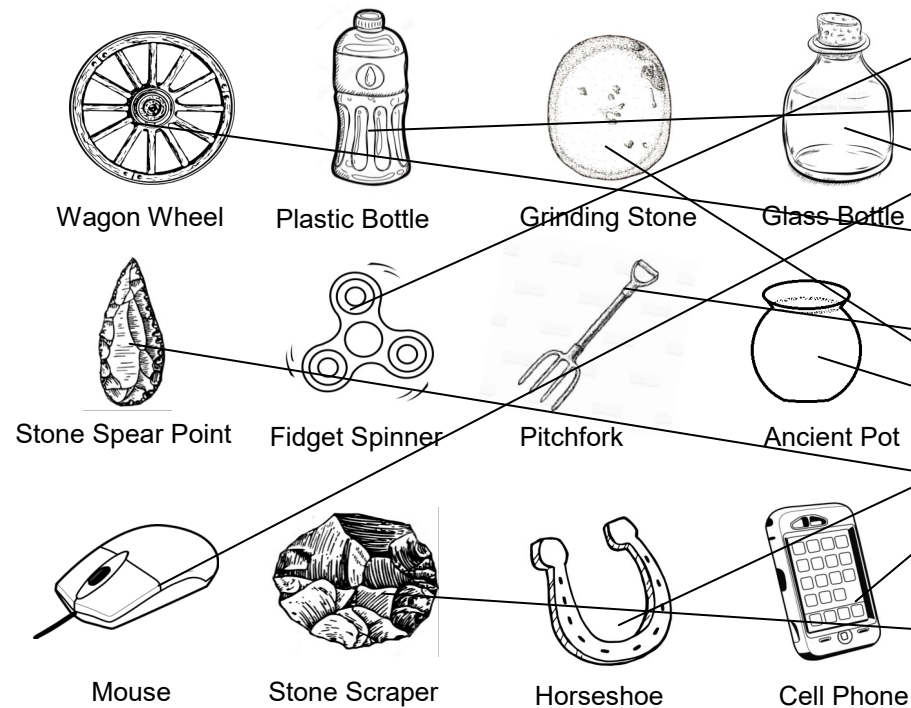
**STRATIGRAPHY** is the study of natural layering of the ground. During an archaeological excavation, each layer of dirt is carefully exposed inch by inch. This is because the further down you dig, the farther back in time you are.

In this activity, you will match artifacts up with the correct layer or *strata* in which they were found. Pay close attention to what the object is made out of.

**Layer A was deposited during the last 10 years.**

**Layer B was deposited from 100 to 150 years ago. The people who lived there then were farmers.**

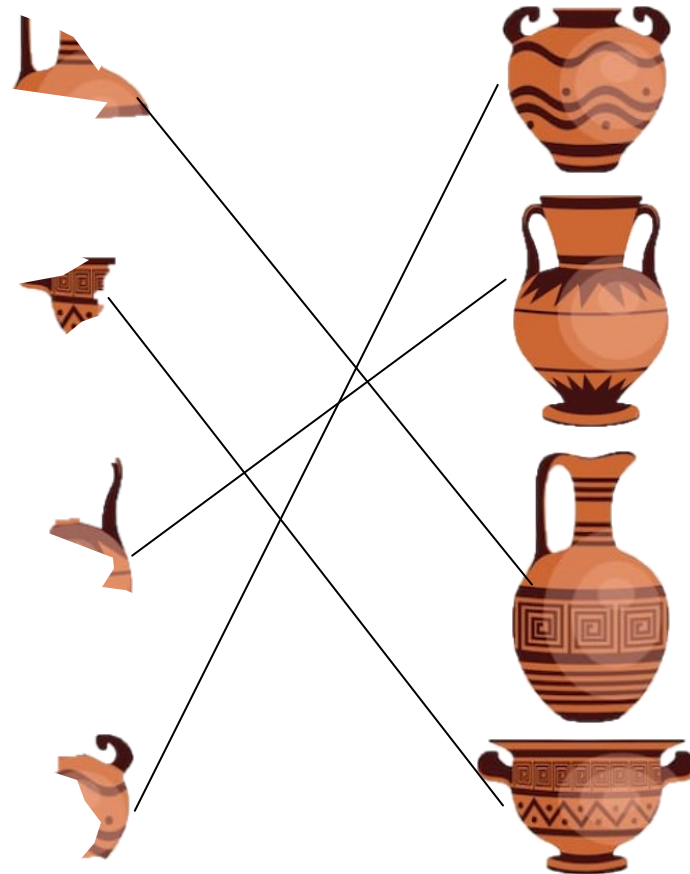
**Layer C was deposited 1,000 years ago. The people who lived there then were prehistoric hunters and gatherers.**



*Draw a line from the artifact to the strata that it came from.*

# Pottery Sherds

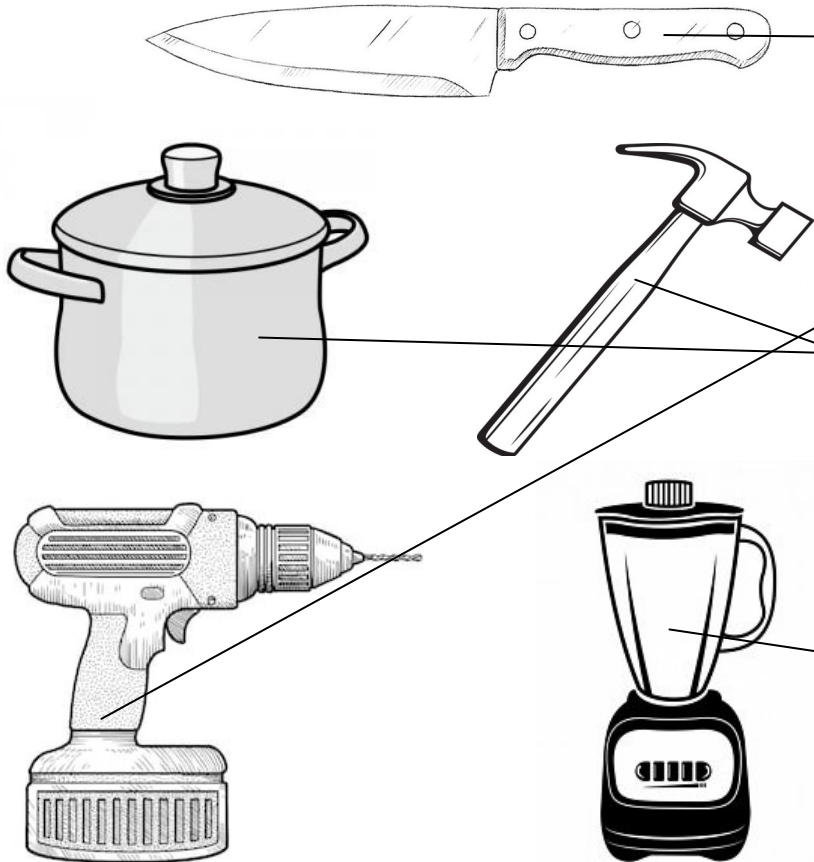
**POTTERY** is the first *synthetic* or human-made material. Essentially artificial stone, pottery is a mixture of clay, water and temper, transformed by the application of heat. Pottery is one of the more common artifacts found by archaeologists. Fired clay objects can last for thousands of years, but are most often found broken into pieces, called **SHERDS**.  
*Draw a line to match the pottery sherd to the vessel it came from.*



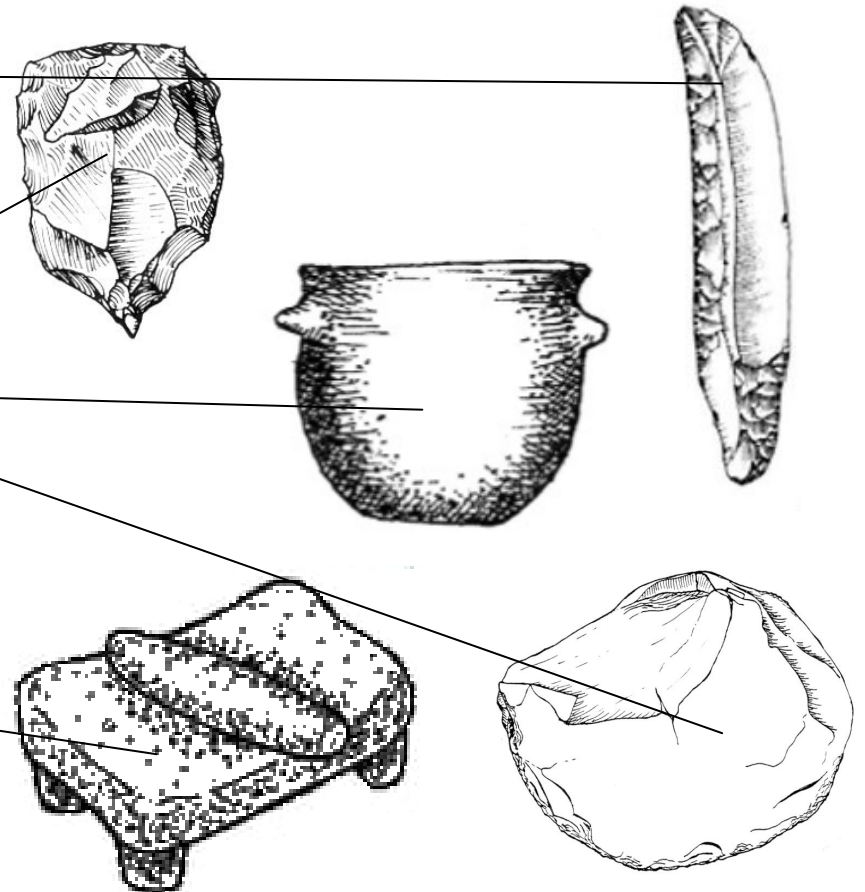
# Tools: Then & Now

People in the past needed tools to do many of the same things we need to do today. *Compare the items from now and then, and draw a line to match those with a similar function.*

## Tools Used Now



## Tools Used Then



# Secret Code

What does the secret code say:

*Looting is a crime*

*Protect the past*

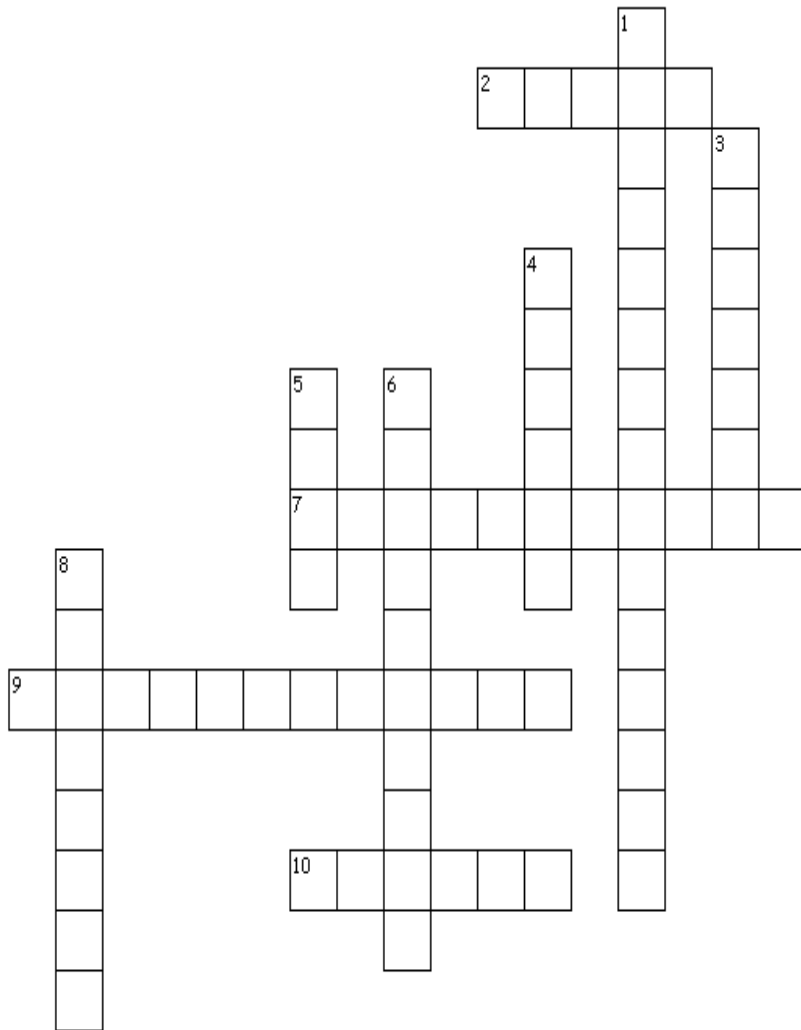
*Leave artifacts where you find them*

# Archaeological Sites

Archaeologists work all over the world. Do you recognize any of these sites? **Match each picture with the name of the archaeological site name and location**

1. **I** \_\_\_ Monticello, Virginia, USA
2. **G** \_\_\_ Moai Statues, Easter Island
3. **D** \_\_\_ Petra, Jordan
4. **F** \_\_\_ Terracotta Army, China
5. **E** \_\_\_ Chichen Itza, Mexico
6. **J** \_\_\_ Stonehenge, England
7. **B** \_\_\_ Colosseum, Italy
8. **A** \_\_\_ Pyramids of Giza, Egypt
9. **C** \_\_\_ Bedrock Milling Stations, California, USA
10. **H** \_\_\_ Ancestral Puebloan Cliff Palace, Colorado, USA

# Crossword



## Across

2. A small piece of pottery

**SHERD**

7. The study of past peoples and cultures through their sites and artifacts

**ARCHAEOLOGY**

9. The study of different layers of soil used to determine how old an artifact is

**STRATIGRAPHY**

10. Special shovel used by archaeologist while excavating

**TROWEL**

## Down

1. The scientific name for "arrowhead"

**PROJECTILE POINT**

3. The illegal destruction of archaeological sites through the non-scientific removal of artifacts

**LOOTING**

4. Trash pile from the past

**MIDDEN**

5. San Diego Archaeological Center where artifacts are preserved

**SDAC**

6. The scientific removal of artifacts from an archaeological site

**EXCAVATION**

8. An object made or used by humans

**ARTIFACT**