

# THE CURATOR

Official E-newsletter of the San Diego Archaeological Center

## Director's Message

BY CINDY STANKOWSKI, EXECUTIVE DIRECTOR

Over the years, I have created hundreds of exhibits at the Center. I think that the best exhibits tell a story but also have a little mystery. I am inviting you to help with a new exhibit: The Rest is History. Sometimes one little item can tell you a lot about what was happening in the past.



For example, archaeologists find these at historic archaeological sites. What are they? Worcestershire Sauce bottle caps. Although they are made of glass, they are very sturdy, and we find many of these at sites. The bottles, however, usually don't survive.

Worcestershire Sauce was developed in Worcester, England. It was inspired by Marcus Sandys, the third Baron Sandys, who had served in Bengal and tasted a fish sauce that he quite liked. He hired two dispensing chemists (pharmacists), John Wheeley Lea and William Henry Perrins, to recreate the sauce. Their first go tasted really terrible. They learned that it needed to ferment before it was edible. Sauces such as Worcestershire were very important before refrigeration, as it hid the taste of meat that might be a bit tainted. The sauce was first imported to the United States in 1839 and, as they say, the rest is history.

Do you have a weird object, a family relic, or a thrift store find that you would like to know more about? Maybe you already know what it is, but would like to share it with the public. Send me an image of the item, and I'll try to help you uncover what it is. If the item is suitable, perhaps we can display it at the Center or online.

Email an image of the item you have and any information you may know to [cstankowski@sandiegoarchaeology.org](mailto:cstankowski@sandiegoarchaeology.org). I'll do my best to figure out what it is.

## This issue:

Director's Message

PAGE 1

Public Archaeology

PAGE 2

Archive & Library

PAGE 3

Collections

PAGE 4

Development

PAGE 5

General Information

PAGE 8

# Kids Dig: Breaking News in Archaeology

BY STEPHANIE SANDOVAL,  
PUBLIC ARCHAEOLOGY DIRECTOR

Welcome back to Kids Dig, where our youngest community members can discover the latest news in archaeology.

What's for dinner? Well, if you're a 750-pound alligator in Mississippi, artifacts might be on the menu. Just last month two ancient artifacts were found inside an alligator's stomach!

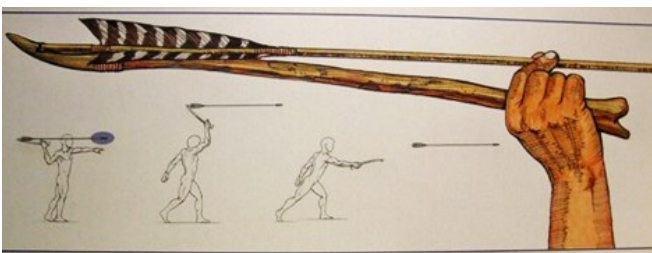


Broken atlatl dart point from alligator

One of the artifacts was a piece of an atlatl dart that experts think is over 7,000 years old! Atlatls are spear throwing sticks used for hunting, and the dart is the sharp projectile point on the end of the spear.



Atlatl and dart point



Plummet from inside the alligator

The other artifact was quite unusual. A plummet, made from hematite, a heavy metallic stone containing iron oxide, was from 3,000 to 4,000 years ago. Scientists are unsure what plummets were used for. Some suggest fishing net weights, but others think that an unusual material like hematite wouldn't be used for such a common activity. What do you think a plummet might be used for?



Why would an alligator find these artifacts tasty? Alligators and other animals ingest, or eat, grit and rocks to help their digestion. Simply, the rocks in their bellies help to break up food. So it's easy to see why these stone tool artifacts might look like a delicious snack to an alligator. Just don't try this at home! In addition to broken teeth, you will have quite a stomach ache.

To find out more about this amazing discovery, check out [Prehistoric Native American artifact found in gator's stomach.](#)



## From the Stacks

BY SUZANNE MORAMARCO,  
COLLECTIONS AND LIBRARY SPECIALIST

The Center Library's purpose is to supplement the archaeological collections representative of San Diego County's history and to increase potential research value by maintaining reports, journals, books, and other documents that pertain to San Diego County and surrounding areas.

The library has undergone numerous changes in the last seventeen years. The addition of moveable shelving in 2007 allowed for most of the library holdings to be displayed on shelves with room to grow the collection.



There have been many generous donors over the years; ninety-nine percent of library materials came from donations. In the past, all types of books, journals, magazines and monographs were accepted. Those that were not needed in the library or did not match our collections criteria were placed for sale in the gift shop as Recycled Knowledge (RK), gently used or like new titles. However, the library is getting closer to being full, the gift shop is well stocked, and RK overflow is taking up space in the collections' storage area.

We can no longer accept any unsolicited donations without a donation form. Collections Manager Jess McPheters created a new donation

policy before she went on maternity leave. This policy applies to both collections and library materials. Donors will need to submit a completed Collections Donation Form describing the material you wish to donate. Once you have filled out the donation form, please email it to [collections@sandiegoarchaeology.org](mailto:collections@sandiegoarchaeology.org). Then we can check our library catalog to see if the titles are needed. This form is available on our [website](#).

## Holiday Craft Project Using Journals



Do you need a craft project for the holidays? We have numerous boxes of old journals in storage that we can't give away. A few years ago, I made this "Christmas tree" out of several journals by folding in the top and bottom corners of each page and attaching them together. It can be painted, or have glitter, gemstones, etc., glued on it. You can turn it on its side and use it for the body and feathers of a turkey. You can tear out pages, fold them, and put them together to form a wreath. Get creative! Give us a call or send us an email to let us know when you will be by, and we will have a stack or box of journals ready for you.

## Welcome, Vanessa!

BY VANESSA CHAPPINS, COLLECTIONS TECHNICIAN

Hello, fellow readers. My name is Vanessa Chappins, and I am happy to be a part of the San Diego Archaeological Center team as their new Collections Technician. As an Indigenous Anthropology student, I am seeking to expand my knowledge regarding education, archaeological research, and curation, and to help the Center share local archaeology with the public. I am looking forward to my future in curation and archaeology, and I am excited to start my journey here at the Center.



I have had the opportunity to gain hands-on experience in the field of archaeology as I have previously excavated for the Palomar College excavation team. The site was located in the Rancho Peñasquitos Nature Reserve where I cataloged, mapped, and collected prehistoric and historic artifacts. The site itself was a coastal and migratory location where Indians had resided in the canyon areas of Los Peñasquitos for at least 7,400 years. Prior to the arrival of the Spanish, native Kumeyaay collected resources from both land and marine areas.



Handstone or mano

In the 1800s, George Alonzo Taylor operated the area to which the rancho was located and its surrounding sites. In 1910 Charles Mohnike and his family took up residence and used the land mainly for farming. By the 1920s, George Sawday purchased the property and set up a crew of cowboys to manage its livestock. For over 25 years, Hank Keeney and his wife lived on the property and managed the livestock. Many of the land's remnants can be found today through archaeology and shared with the public through careful preservation of artifacts and history.

Additional information from Cole Klein, M. (2015). Mohnike Barn Record and Survey Report Johnson-Taylor Adobe House Site, Los Peñasquitos.



Rancho Peñasquitos excavation unit



## #GivingTuesday: See the Past in 3-D

BY DANTÉ FARENGA,  
DEVELOPMENT & MARKETING DIRECTOR

Save the date for #GivingTuesday on November 30, 2021. The San Diego Archaeological Center needs your help to raise \$8,000 in just 24 hours. The funds will be used to create three-dimensional scans of the artifacts in our collections. With these virtual models, we can make our collections more accessible to students, researchers, cultural resource management professionals, and the public.

Your support will help us purchase the equipment and software needed to photograph and scan our collections:

- turntable to rotate artifacts during the photographic process
- photo backdrop with black velvet cloth and foam tiles
- LED lantern with removable panel lights and LED light with adjustable clip for object illumination
- scale bars to indicate size of artifacts
- Sketchfab software to host the 3-D scans
- Metashape Pro photogrammetry software to create the 3-D scans
- desktop computer for creating 3-D scans in Metashape Pro and uploading the scans to Sketchfab

Do you want to learn more about how we will use photogrammetry to create three-dimensional models of artifacts? Join us for our live virtual fundraising event on November 30 at 6:30 PM to see Dr. Jon Spenard demonstrate this technology, hear updates from Center staff, and pledge your support for this project. Stay tuned for more details in November.

## Become a Member

The San Diego Archaeological Center is the only local facility dedicated to the curation of artifacts from San Diego's archaeological sites. Your support preserves these cultural treasures and makes them available to both the public and researchers. Help share the stories that these artifacts have to tell by becoming a member.



Membership at the San Diego Archaeological Center entitles you to special membership advantages, such as free admission to the Museum, borrowing privileges for the Library, invitations to member events, discounts on lectures and workshops, and our monthly member newsletter.

Center Membership can be purchased [online](#), over the phone at 760-291-0370, or by sending a check made out to the San Diego Archaeological Center.

## Monthly Giving

Do you prefer a monthly payment plan instead of an annual membership? Join our Purveyors of the Past Monthly Giving Program. As a recurring donor, you will automatically receive Center membership as our gift to you.

Making recurring donations is quick and easy. Just select Monthly under Donation Frequency on our [online form](#). You may donate the amount that you are comfortable giving each month. No matter how big or small the sum, we consider every gift essential to sustaining the Center!

## IN APPRECIATION

We are grateful for the time and talents, membership, donations, and in-kind support we received from 7/1/21 to 9/30/21.

### Welcome New Members

Ana Brill  
Barry Eggleston  
Pam & John Lundblad  
Shane McDonnell

### Thank You to Our Purveyors of the Past

Susie Arter  
Karen Crawford  
Kathy Dickey  
James Eighmey  
Susan Gilliland  
Dr. G. Timothy Gross  
Marty Rosen  
Cindy Stankowski  
Maureen Steiner

### Thank You for Your Donations

Bruce & Carol Gallagher  
Shannon Murphy  
Jim Royle  
Jeff & Karen Shabel

### Thank You for Your In-Kind Donations

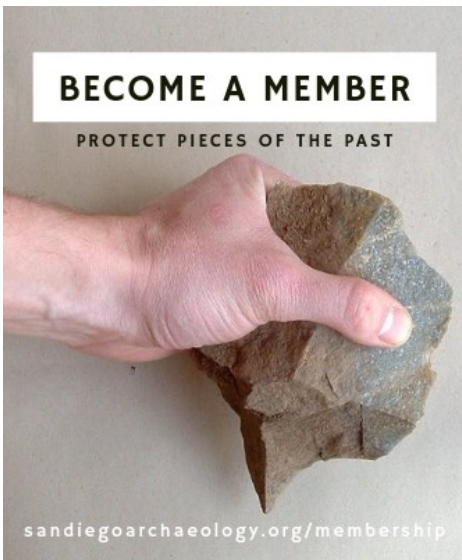
Jim Royle  
Jerry Schaefer

### Thank You to Our Volunteers and Interns

Rebecca Baumann  
Olivia Benchetrit  
Chris Blake  
Dylana Buchanan  
Vanessa Chappins  
Kassandra Contreras  
Linda Coulson  
Kathy Dickey  
David Gauss  
Sarah Goldstein  
Kirra Hogan  
Riley Jackson  
Neah Johnson  
Bianca Loyola  
Meagan McCarthy  
Kellen McClard  
Kristina Moore  
Belyn Naquin  
Chris O'Connor  
JP Oliveira  
Melanie Parker  
Marty Rosen  
Jim Royle  
Kathy Russell  
Amanda Sheley  
Russell Silberberger  
Carol Smock  
Samantha Veasart  
Tim Wolfe



Commission for  
Arts and Culture

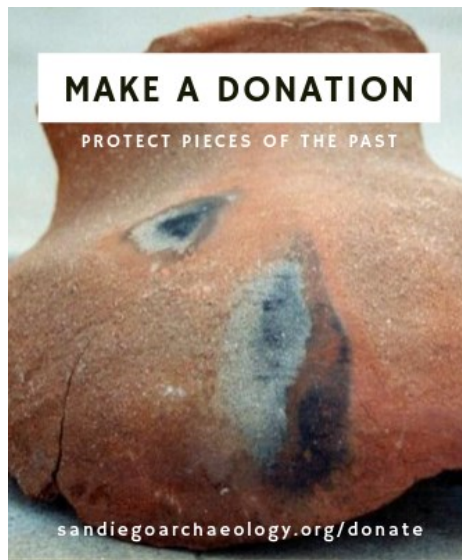


## BECOME A MEMBER

PROTECT PIECES OF THE PAST

[sandiegoarchaeology.org/membership](http://sandiegoarchaeology.org/membership)

The Center is the only local organization dedicated to the collection, study, curation and exhibition of San Diego County's archaeological artifacts. Your membership helps save our history and heritage. **Membership** can be purchased [online](#), over the phone, or by mail.

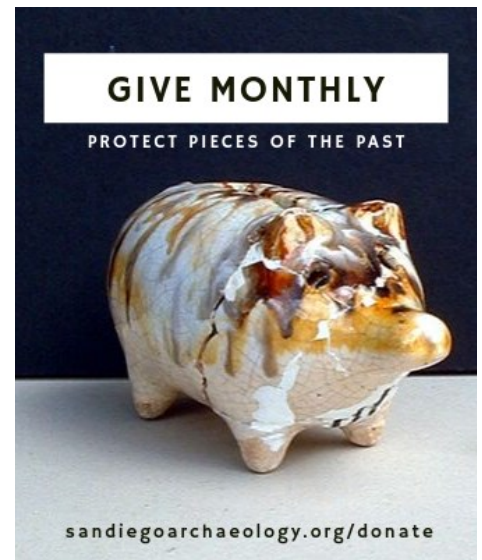


## MAKE A DONATION

PROTECT PIECES OF THE PAST

[sandiegoarchaeology.org/donate](http://sandiegoarchaeology.org/donate)

**Cash donations** may be made to the Center by visiting our [website](#), or with a check made to the San Diego Archaeological Center. **In-kind gifts** are contributions of goods or services to our organization. Please [contact us](#) if you would like to make this type of donation.

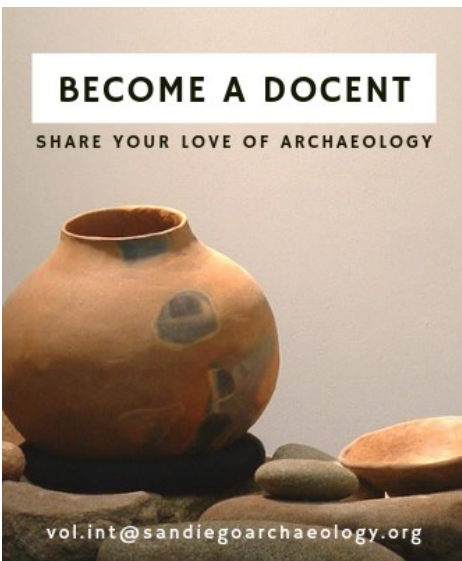


## GIVE MONTHLY

PROTECT PIECES OF THE PAST

[sandiegoarchaeology.org/donate](http://sandiegoarchaeology.org/donate)

**Purveyors of the Past Monthly Donation Program** is an easy and convenient way of supporting the many important projects at the Center. You may determine the amount to donate per month and the specific campaign, project, or program to fund. Please [contact us](#) for more information.



## BECOME A DOCENT

SHARE YOUR LOVE OF ARCHAEOLOGY

[vol.int@sandiegoarchaeology.org](mailto:vol.int@sandiegoarchaeology.org)

**Docents** welcome visitors and answer general questions regarding the Center and exhibits. Hours are flexible. To apply for a volunteer position or for more information, please email [vol.intern@sandiegoarchaeology.org](mailto:vol.intern@sandiegoarchaeology.org).

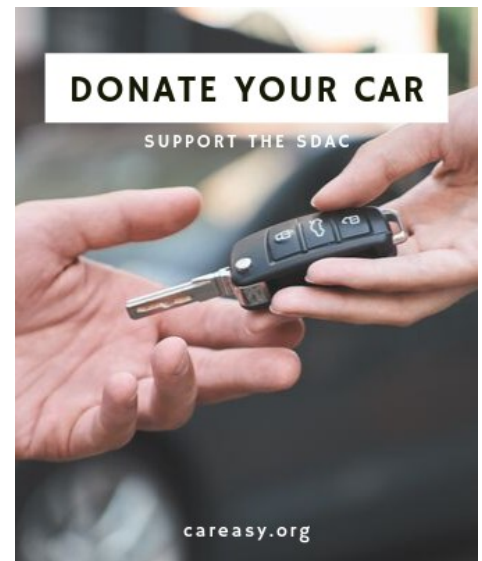


## SHOP AMAZONSMILE

SUPPORT THE SDAC

[smile.amazon.com](http://smile.amazon.com)

**AmazonSmile** lets customers enjoy the same wide selection, prices, and convenience as shopping as Amazon.com. When you [shop on AmazonSmile](#), the AmazonSmile Foundation will donate 0.5% of the purchase price to the Center.



## DONATE YOUR CAR

SUPPORT THE SDAC

[careasy.org](http://careasy.org)

Purchasing a new car or truck this year? **Donate your old vehicle** to benefit the Center through the [C.A.R.S.](#) program. Your generous gift is tax-deductible and will support the Center's exhibitions, programs, and curatorial efforts.





# San Diego Archaeological Center

MUSEUM • EDUCATION • RESEARCH

## CONTACT US

16666 San Pasqual Valley Road  
Escondido, CA 92027  
760-291-0370  
[sandiegoarchaeology.org](http://sandiegoarchaeology.org)

## FOLLOW US

Facebook: [@SDArchCenter](https://www.facebook.com/SDArchCenter)  
Twitter: [@sdac](https://twitter.com/sdac)  
Instagram: [@sandiegoarchcenter](https://www.instagram.com/sandiegoarchcenter)



## MARKETING

Every effort has been made to ensure the accuracy of the information in this e-newsletter. For corrections, please contact the editor, Danté Farenga, at [dfarenga@sandiegoarchaeology.org](mailto:dfarenga@sandiegoarchaeology.org).



## BOARD OF TRUSTEES

G. Timothy Gross, Ph.D. - President  
Brian Williams, M.M.A., RPA - Vice President  
Martin D. Rosen, M.A., RPA - Secretary  
Teodora Podesta, M.A. - Treasurer  
Donna Beddow, M.A., RPA  
Ana Brill, M.S.  
James Eighmey, M.A.  
Bailey Jagers  
Stephen F. Lambert  
Betsy Pain, M.A.  
Jon Spenard, Ph.D.  
Michael Thacker

## ADVISORY COUNCIL

Bruce Gallagher, Esq., Chair  
Michael G. Baksh, Ph.D.  
Stan Berryman, Ph.D.  
James Bonk, III, CPA  
Dennis Gallegos  
Philip Goscienski, M.D.  
Maureen Steiner, Esq.  
Marsha Tepner

## STAFF

Cindy Stankowski, M.A. - Executive Director  
Stephanie Sandoval, M.A. - Deputy Director  
Vanessa Chappins - Collections Technician  
Danté Farenga - Development & Marketing Director  
Jessica McPheters, M.A. - Collections Manager  
Suzanne Moramarco - Collections & Library Specialist

