

THE CURATOR

Official E-newsletter of the San Diego Archaeological Center

Director's Message

BY CINDY STANKOWSKI, EXECUTIVE DIRECTOR

I sincerely hope that you, your family, and friends are well. This has been a very difficult time for all of us. I am trying to concentrate on what can be done, not what we can't do presently. I have been coming up to the Center to work on the garden. The rain was certainly lovely, but I'm afraid that I will never run out of weeds to pull! It is quite therapeutic to clean a patch up though. I hope that you are finding things to do, too.

I am very happy to report that I saw California quail here for the first time since the fires in 2007. Interestingly, they are hanging out in the same area they used to be. A greater roadrunner has been zipping by, always in a hurry. I saw it stalking a lizard, but its prey gave it the slip. The kestrels nesting in the gum trees now have a clutch. There's lots of noise, especially at feeding time. I have set a goal to try and identify a new bird every day. I encourage you to spend some time out of doors if you can. It's good to know that life continues and spring is here.



The Center will reopen as soon as it is declared safe to do so. In the meantime, please check our [website](#) and [Facebook page](#) for new educational content, especially for kids! If you have ideas for lectures, workshops, or other events, please let us know at cstankowski@sandiegoarchaeology.org. We will be putting things back on the calendar shortly. Stay curious!

This issue:

Director's Message

PAGE 1

Public Archaeology

PAGE 2

Archive & Library

PAGE 3

Collections

PAGE 4

Development

PAGE 5

General Information

PAGE 8

Public Archaeology During COVID-19

BY STEPHANIE SANDOVAL, PUBLIC ARCHAEOLOGY DIRECTOR

Archaeology is a field that lends itself well to in-person, tactile experiences. During normal times, we search for creative ways to bring people out to the Center to actively engage with archaeology through hands-on museum exhibits, youth field trips, and volunteer and intern programs promoting original research. Maintaining this public engagement with archaeology and collections that remain cared for at the Center during this time of social distancing is our new challenge.

As we continue with stay at home orders, the Center is working to keep you connected by moving our lectures and other programming online. For kids stuck at home, check out our new weekly blog, [Dr. Arty Fax's Archy Facts](#). Each week will look at different topics in archaeology, interesting sites all over the world, and fascinating finds. There are even activities to do at home, keeping your kids occupied for just a bit longer.



Gillian Wong attempting to safely transport a nearly complete horse jaw from the site to the lab in 2018.

Registration is now open for our first live streaming lecture, [Animal Bones & Teeth: Stone Age Environments Revealed](#) by Gillian Wong. A big thank you goes to Ms. Wong for her willingness to

be the test subject as we put together our first live lecture and Q&A online. In addition to reaching people outside of San Diego County, another great benefit of online lectures is your choice of food and beverage during the talk is not limited to what we serve at the Center, but rather your stay-at-home pantry supply - hopefully you are well-stocked!

As many of our traditional forms of revenue are lost or suspended, including pending cuts to local arts and culture grant funding, we are ever appreciative of our donors and members who continue to support the Center. By enhancing our online content to bring alive stories of our past and the science of archaeology, we rise to meet this new challenge, continuing to fulfill our mission to preserve archaeological collections and share them with the public.

Virtual Event



At-Home Activities for Kids



From the Stacks

BY SUZANNE MORAMARCO, COLLECTIONS AND LIBRARY SPECIALIST

The last several weeks, with the museum closed, has been time to reevaluate what we have accomplished in the past, where we are at today, and where we are going in the future.

Some years ago, I was asked what I had learned since I started working at the Center. I have been thinking about it off and on since then. At the end of this summer it will have been 16 years since I came to the Center as a library intern. The one thing I am certain of is that the more I learn about archaeology and working in a museum, the more there is still to learn. Learning is a continuous process and is eased by making connections.



A prehistoric dart point from the Center's collections

I have been doing tutorials for MS Excel and Access to be better able to work with those programs with collections. MS Access is a relational database software. A lot of it sounded familiar. Then I realized that was because of the reading I have been doing for GIS (Geographical Information Systems) which is also a relational database. Additionally, I have been reading a geology workbook to help in identifying stone materials. The workbook has a chapter on Topographic Maps, Aerial Photographs, and Satellite Images which includes information on Scales of Maps and Models, and the U.S. Public

Survey System that divides land into townships and ranges. That information will go into the intern and volunteer guidebooks for Collections, GIS, and Library. With collections it is helpful to be able to read a map, especially if you are going to work out in the field where the internet is not always accessible. The different elements of maps are taught in the Introduction to GIS class at Palomar College. The library has a map collection with many types of maps. This workbook and chapter will help a volunteer or intern identify and organize them, as a future project at the SDAC.



Preliminary Geologic Map of the El Cajon 30' x 60' Quadrangle, Southern California, Compiled by Victoria R. Todd

Learning about sedimentary rocks, processes, and environments will help in understanding how clay forms and its use in making pottery hundreds of years ago. It still awes me today to see what looks to be a thumb print on the interior side of a ceramic sherd, to see incising on another sherd, and to see flake scars on a stone tool. All are purposeful acts of people who lived long ago. Making these connections will help improve our work in the future.

What I have learned, or gained, rather, is an understanding and appreciation of the people who have made what today is called San Diego County home over the last 10,000 years.

Collections Happenings

BY JESSICA MCPHETERS, COLLECTIONS MANAGER

While COVID-19 has disrupted our daily lives, if we continue following guidelines and practicing social distancing by staying home, hopefully we can all return to a new normal sometime soon! In the meantime, the San Diego Archaeological Center has still been hard at work preserving and protecting San Diego history for past, present, and future generations.

Collections are safe in the vaults, and the Center is continuing to monitor their temperature, humidity, and security on a regular basis. We are incredibly fortunate to have so many volunteers and interns that work in the lab and assist collections staff with processing and curating collections. During this time at home, we miss them dearly!

As Collections Manager, I have additionally been using this time to continue my education by doing research on updates in best practices for museums and for archaeological collections. As you can imagine, museums are quickly moving to adapt to the changes brought on by the virus and the social distancing orders that have been put in place. Additionally, I am updating procedures and policies, like the Center's Collections Management Policy and Emergency Preparedness Plan.

Of the 735 collections and millions of artifacts that the Center cares for, fewer than 35 of those collections are still awaiting the Curation process. While the lab has had to hit pause on processing collections for the time being, there is still much work that can be done. The Curation process involves reading the project report, taking a physical inventory of all box contents (this includes counting, weighing, and sometimes cleaning the artifacts), creating a digital catalog of artifacts, labeling, and producing all of the documentation that goes along with a collection. While we are at home and cannot work with the artifacts directly, we have

been able to work on formatting the digital catalogs the Center receives when collections are first delivered so that they meet Center standards. This will expedite the Curation once the lab is back up and running again, as formatting can sometimes be tedious and time-consuming.

We are working to continue furthering our mission to preserve archaeological collections and promote their educational, scientific and cultural use to benefit a diverse public by using social media more than ever to share artifacts and collections with our communities near and far. Check out our [Instagram](#) weekly for 'What is it Wednesday?', 'Find out Friday!', and 'Dig Deeper' Saturday to learn more about archaeology and get a closer look at Center collections! On our website, you can read [Dig Deeper](#), a monthly blog focusing on the basics of archaeology by taking a closer look at the exhibition Archaeology 101.

To learn more about Center collections, visit our [website](#). We look forward to being able to open our doors and welcome back the community soon. Until then, stay positive and healthy, and remember that we are all in this together!

For questions about Center collections, or to learn more about volunteering in the lab in the future, email me at jmcpeters@sandiegoarchaeology.org.

Dig Deeper Blog



To Our SDAC Community

BY DANTÉ FARENGA, DEVELOPMENT & MARKETING DIRECTOR

We would like to thank everyone who has supported the Center during these challenging times. Even though our doors are not currently open to the public, we will continue to care for the millions of artifacts in our collections and share them through educational content and activities that you can access from home. Your generous contributions help us bring the past into the present and ensure that local archaeological resources will be available to future generations.

We miss you and look forward to welcoming you to the Center again. In the meantime, we hope you join us for our upcoming [virtual lecture](#), explore our website ([Dr. Arty Fax's Archy Facts](#), [Dig Deeper](#), [From Inside the Vaults](#), and [GIS StoryMap Projects](#)) and say hello to us on our social media channels ([Facebook](#), [Twitter](#), and [Instagram](#)).

Stay safe and healthy!



If you would like to make a donation to the Center, you may do so online on our [website](#), by phone at 760-291-0370, or by mail with a check sent to the following address:

San Diego Archaeological Center
ATTN: Development Department
16666 San Pasqual Valley Road
Escondido, CA 92027

Thank you for protecting the past.

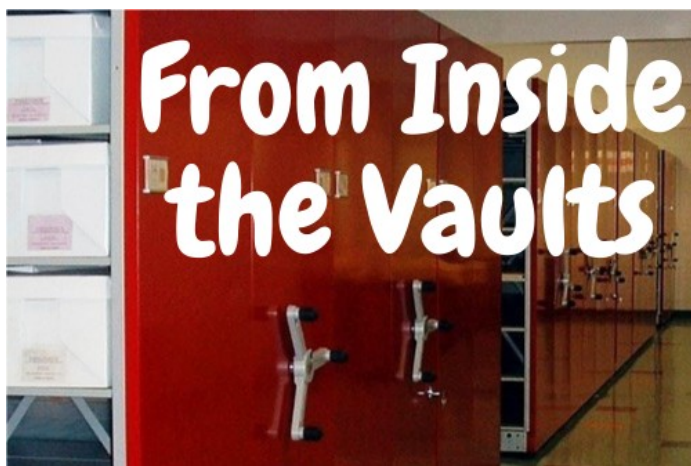
Shop and Support the SDAC

Are you practicing social distancing by shopping online instead? You can support the Center by shopping on [AmazonSmile](#). What an easy way to give back!



Traditional Chinese Brownware jug from our What Is It Wednesday series on Facebook, Twitter, and Instagram

In Case You Missed It



IN APPRECIATION

We are grateful for the time and talents, membership, donations, and in-kind support we received from 1/1/20 - 3/31/20.

Welcome New Members

Rachel Bilchak
Randall Burger
James Daniels
Belinda Harris
Dr. John Henderson
Deborah Mossa
Paul Price
Buck Slader
Peter Sullins
Diane Tells His Name
Ron Velarde

Thank You to Our Purveyors of the Past

Karen Crawford
Maureen Steiner
Jim Royle

Thank You for Your Donations

ASM Affiliates
Susie Arter
Natalie Lauer
Anthony Mournian
John Shutler



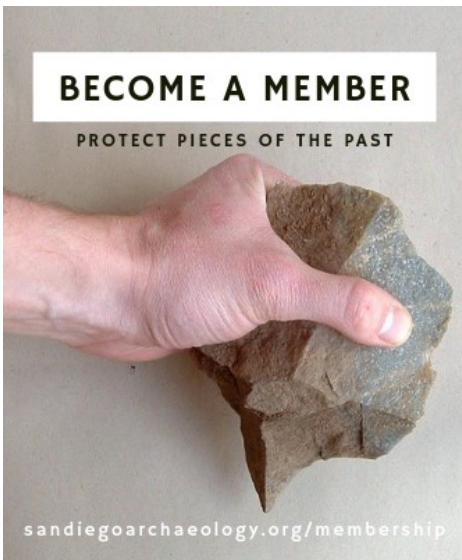
Thank You for Your In-Kind Donations

Barbara Mogel
Dr. Norrie Robbins
Jim Royle

Thank You to Our Volunteers and Interns

Andre Abassi	Meagan McCarthy
Brian Ahkoi	Valeria Munnia
Chris Blake	Traysen Nichols
Hayden Bruskotter	Chris O'Connor
Dylana Buchanan	Melanie Parker
Randy Bullock	Alexis Rogers
Vanessa Chappins	Paige Rooney
Dina Chatelain	Peggy Rossi
Linda Coulson	Jim Royle
Kathy Dickey	Kathy Russell
Rick Finn	Carolina Saheli
David Gauss	Jessica Schilter
Alana Hansen	Russell Silberberger
Neah Johnson	Carol Smock
Rickey Ketcham	Rob Stahl
Sean Kirsininkas	Samantha Veesart
Katrina Limson	Allison White
Kellen Lovell	Tim Wolfe
Bianca Loyola	Gillian Wong
George Mason	Rosa Zhang





BECOME A MEMBER

PROTECT PIECES OF THE PAST

sandiegoarchaeology.org/membership

The Center is the only local organization dedicated to the collection, study, curation and exhibition of San Diego County's archaeological artifacts. Your membership helps save our history and heritage. **Membership** can be purchased [online](#), over the phone, or by mail.

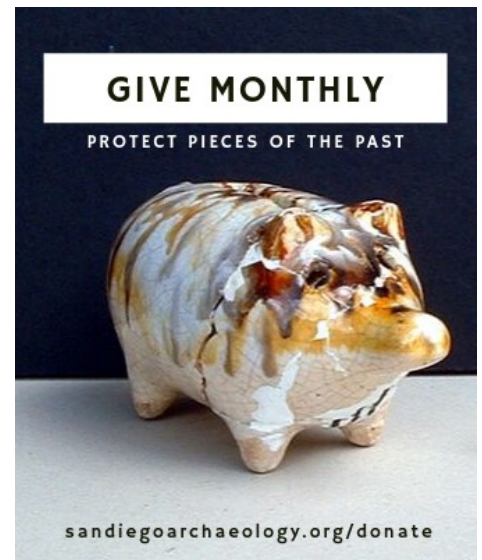


MAKE A DONATION

PROTECT PIECES OF THE PAST

sandiegoarchaeology.org/donate

Cash donations may be made to the Center by visiting our [website](#), or with a check made to the San Diego Archaeological Center. **In-kind gifts** are contributions of goods or services to our organization. Please [contact us](#) if you would like to make this type of donation.

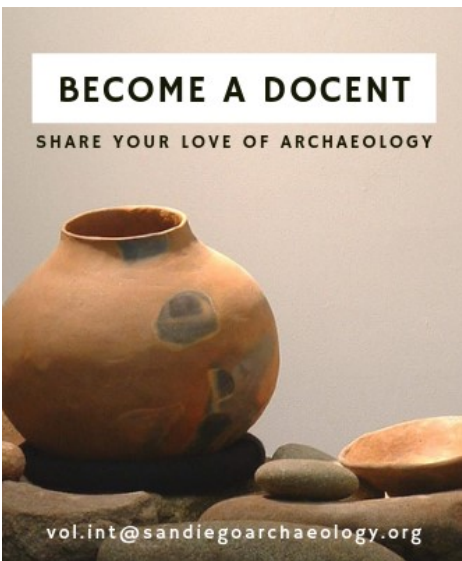


GIVE MONTHLY

PROTECT PIECES OF THE PAST

sandiegoarchaeology.org/donate

Purveyors of the Past Monthly Donation Program is an easy and convenient way of supporting the many important projects at the Center. You may determine the amount to donate per month and the specific campaign, project, or program to fund. Please [contact us](#) for more information.



BECOME A DOCENT

SHARE YOUR LOVE OF ARCHAEOLOGY

vol.int@sandiegoarchaeology.org

Docents welcome visitors and answer general questions regarding the Center and exhibits. Hours are flexible. To apply for a volunteer position in the fall or for more information, please email vol.intern@sandiegoarchaeology.org.

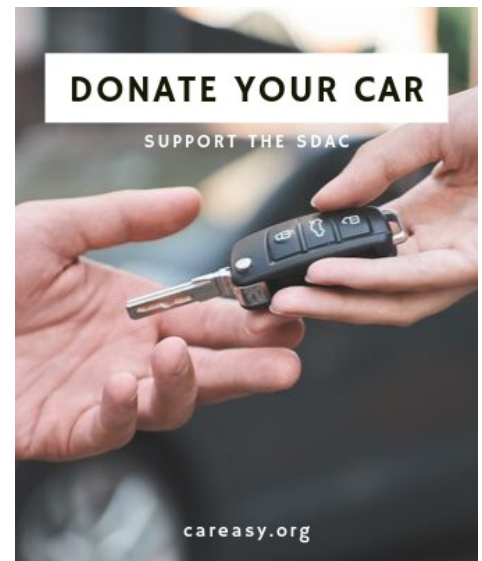


SHOP AMAZONSMILE

SUPPORT THE SDAC

smile.amazon.com

AmazonSmile lets customers enjoy the same wide selection, prices, and convenience as shopping as Amazon.com. When you [shop on AmazonSmile](#), the AmazonSmile Foundation will donate 0.5% of the purchase price to the Center.



DONATE YOUR CAR

SUPPORT THE SDAC

careasy.org

Purchasing a new car or truck this year? **Donate your old vehicle** to benefit the Center through the [C.A.R.S](#) program. Your generous gift is tax-deductible and will support the Center's exhibitions, programs, and curatorial efforts.



San Diego Archaeological Center

MUSEUM • EDUCATION • RESEARCH

CONTACT US

16666 San Pasqual Road
Escondido, CA 92027
760-291-0370
sandiegoarchaeology.org

FOLLOW US

Facebook: [@SDArchCenter](https://www.facebook.com/SDArchCenter)
Twitter: [@sdac](https://twitter.com/sdac)
Instagram: [@sandiegoarchcenter](https://www.instagram.com/sandiegoarchcenter)



MARKETING

Every effort has been made to ensure the accuracy of the information in this e-newsletter. For corrections, please contact the editor, Danté Farenga, at dfarenga@sandiegoarchaeology.org.

BOARD OF TRUSTEES

Rob Case, M.A., RPA - President
Brian Williams, M.M.A., RPA - Vice President
James W. Royle, Jr. - Secretary
David Mayes - Treasurer
Donna Beddow, M.A., RPA
James Eighmey, M.A.
G. Timothy Gross, Ph.D.
Steve Lambert
Betsy Pain, M.A.
Martin D. Rosen, M.A., RPA
Michael Thacker

ADVISORY COUNCIL

Bruce Gallagher, Esq., Chair
Michael G. Baksh, Ph.D.
Stan Berryman, Ph.D.
James Bonk, III
Dennis Gallegos
Philip Goscienski, M.D.
Maureen Steiner, Esq.
Marsha Tepner

STAFF

Cindy Stankowski, M.A. - Executive Director
Danté Farenga - Development & Marketing Director
Jessica McPheters, M.A. - Collections Manager
Suzanne Moramarco - Collections & Library Specialist
Stephanie Sandoval, M.A. - Public Archaeology Director

