

THE CURATOR

Official E-newsletter of the San Diego Archaeological Center

Director's Message

BY CINDY STANKOWSKI, EXECUTIVE DIRECTOR

What can I say about the last year that hasn't been said already? It was terribly difficult in so many ways. To those of you who lost loved ones or were ill, I hope that your heart is healing. After all we have been through, I truly appreciate the arrival of Spring. It seems that the birdsong is sweeter and the flowers brighter.

I am happy to say that the Center will be once again welcoming visitors. Starting on April 24th, visitors will be welcome on Thursdays and Fridays, 9 a.m. to 4 p.m. and Saturdays, 10 a.m. to 2 p.m. You can schedule your visit on our [website](#) or by calling 760-291-0370.



To welcome you back to the Center, please join us on Saturday, April 24th for our [Spring Bazaar & Book Sale](#). From 10 a.m. to 2 p.m. browse the selections for those books you can't live without. See page 3 for sample titles. In addition, we have items from all over the world for sale. I'll bet you have been looking for a vintage Bullroarer from Australia. What about a vintage Acoma painted bowl? Or a painted gourd from Peru?

The Center has carefully prepared for your visit with investment in high-quality cleaning supplies and doubled our cleaning efforts. Sanitation stations are available at several locations. We have adopted a touchless checkout system and are not accepting cash at this time. Displays are separated to help maintain social distancing.

See you soon!

This issue:

Director's Message

PAGE 1

Public Archaeology

PAGE 2

Archive & Library

PAGE 3

Collections

PAGE 4

Development

PAGE 5

General Information

PAGE 8

Kids Dig: Breaking News in Archaeology

BY STEPHANIE SANDOVAL,
PUBLIC ARCHAEOLOGY DIRECTOR

Welcome to Kids Dig, where our youngest community members can discover the latest news in archaeology.

This issue's breaking news comes all the way from the United Kingdom, courtesy of an archaeology-minded fluffle. "What in the world is a fluffle?" you might ask. Well, this funny little word means a group of wild rabbits. It turns out that a specific fluffle of bunnies has been uncovering some very interesting artifacts on Skokholm Island.

Skokholm Island, also known as Dream Island because of its natural beauty, is off the coast of Wales. Starting in 1324, it was a rabbit farm for 200 years. Fast forward to the present day where the descendants of those rabbits are making headlines!



Images credit of Richard Brown & Giselle Eagle/WTSWW



Stone tool found near rabbit warren

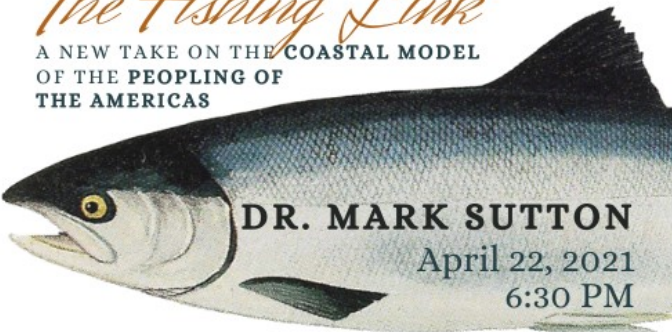
It was reported just last month that a Stone Age artifact was found near a rabbit warren, or hole. Researchers think that this stone tool was used for preparing seal hides or processing shellfish and dates all the way back to 9,000 years ago! Just a few days later, a potsherd (see below) was found near the same place. This fragment is from a thick-walled pot and is about 3,750 years old!



For more information on this fascinating discovery, check out this [article](#) from Live Science.

Virtual Events


The Fishing Link
A NEW TAKE ON THE COASTAL MODEL
OF THE PEOPLING OF
THE AMERICAS



DR. MARK SUTTON
April 22, 2021
6:30 PM

Hominins
ZOOARCHAEOLOGICAL EVIDENCE FOR MEAT EATING BY OLDOWAN HOMININS AT KANJERA SOUTH, KENYA

Hyenas & Lions



Dr. Jennifer Parkinson
May 13, 2021
6:30 PM

From the Stacks

BY SUZANNE MORAMARCO,
COLLECTIONS AND LIBRARY SPECIALIST

One activity people seem to have been doing over the past several months, is getting a head start on their spring cleaning. In that time, the Center has received several donations of books and magazines. Our recycled knowledge storage is overflowing. To help solve this problem we are having a [Spring Bazaar & Book Sale](#).

As travel is still somewhat restricted, you can do your traveling through reading. We have travel magazines and books about cultures in far off places.

You can go from Vanuatu in the South Pacific to *The Iberian Stones of Spain and Portugal*.

Learn about *Ghost Dog and Other Hawaiian Legends*, *The Pitcairn Islanders*, and *Coming of Age in Samoa*.

Travel through time with books on man's beginnings with *Lucy's Child: The Discovery of a Human Ancestor*, to who reached America's shores first with *The Year China Discovered America*.

Explore San Diego in time and place through the *Journal of San Diego History*. Plan future adventures with *Afoot & Afield in San Diego County*.



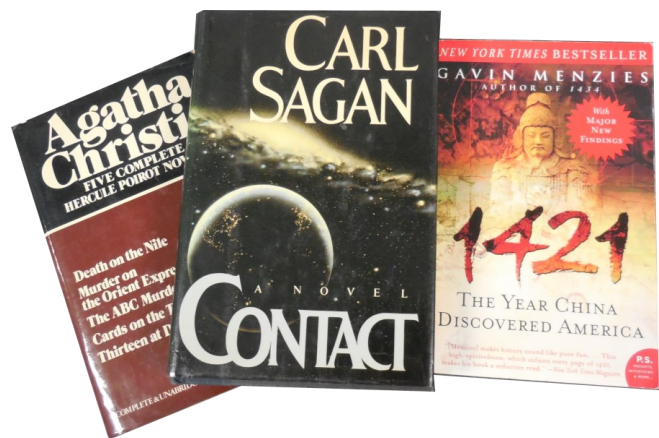
Take a river boat trip with John Wesley Powell in *The Exploration of the Colorado River and Its Canyons*, go hiking with John Muir in *My First Summer in the Sierra*, or go *Adventuring in the Rockies*.

Go to far off places with *National Geographic*. We have issues from 1971 through 2019.

Get into nature with *Wildflowers: How to Identify Flowers in the Wild and How to Grow Them in Your Garden*, and with guide books on birds, trees, and plants. Learn *How Plants Get Their Names*.

Discover the west with *Roadside History of California* and *Roadside History of Arizona*.

Delve into natural history with *Hen's Teeth and Horse's Toes: Further Reflections in Natural History*, and *Dinosaurs in a Haystack: Reflections in Natural History*.



Enter another realm through *Contact*, and *Cosmos* by Carl Sagan, along with *Dirk Gently's Holistic Detective Agency* and *The Long Dark Tea-Time of the Soul* by Douglas Adams.

For those who enjoy a good mystery, there is the Elizabeth Peters' Amelia Peabody series placed in Victorian-era Egypt, (titles include *Crocodile on the Sandbank* and *The Last Camel Died at Noon*) and two volumes of Agatha Christie titles.

At the Book Sale on Saturday, April 24 from 10 a.m. to 2 p.m., regular priced Recycled Knowledge paperbacks will be \$1.00 each, or 10 for \$5, and hardback books will be \$3.00 each, or 5 for \$10. On the higher priced Recycled Knowledge, SDAC members will receive 50% off, and non-members will receive 25% off.

For any questions about these titles or the Center Library, contact Suzanne Moramarco at library@sandiegoarchaeology.org.

New Acquisitions

BY JESSICA MCPHETERS, COLLECTIONS MANAGER

This past winter, the SDAC launched the new virtual exhibition *New Acquisitions*!

New Acquisitions is a virtual exhibit where we will share information about collections coming into the Center. The exhibit is featured on the SDAC [website](#) and is being updated as new collections are acquired. The San Diego Archaeological Center is grateful that even amidst a pandemic, new collections are still being brought in for long-term preservation and research.

Most of the collections that are curated at the SDAC come to us from Cultural Resource Management (CRM) firms. These CRM firms work with developers from around the county to make sure that construction is done using ethical methods and that archaeological sites are protected and documented. Once their work is complete, CRM firms curate collections at the SDAC for long-term preservation and care, allowing for community research and access. Let's see what's new!



Catalog Number: CA-SDI-10299-2019-509
Material Class: Ground stone
Object Type: Metate Material: Granite
Quantity: 1 Weight: 7937.9 grams

SDAC 740 Delivered October 28th, 2020

Project Name: Lonestar Site

Site(s): CA-SDI-10299

USGS Quad Location: Otay Mesa 7.5'

Year of Excavation: 2019-2020

Site Description: Middle Holocene milling tools found in Otay Mesa during a monitoring program.

Archaeologists think it is likely that this is a small, localized single deposit, disturbed habitation site dating to approximately 5,500 years ago with milling tools, steep edge unifacial tools, battered implements, bifaces (points and knives), flake tools, cores, unifacial rejuvenation flakes, debitage, and a small amount of shell. The presence of these cultural resources indicates this site was used for a special purpose, likely short-term habitation used on a seasonal basis to acquire, process, and utilize seasonal resources.



Catalog Number: CA-SDI-9976-2019-92
Material Class: Shell, unmodified
Object Type: Fragment Material: Pectin
Quantity: 1 Weight: 9.3 grams

SDAC 741 Delivered December 17th, 2020

Project Name: The SDG&E Tie Line Wood to Steel Street Project

Site(s): CA-SDI-9976

USGS Quad Location: Otay Mesa 7.5'

Year of Excavation: 2019

This project consisted of an excavation and recovery of archaeological materials in quantities that are sufficient to mitigate the impacts of the project on the integrity of the site. Excavation and recovery revealed that the ground sediments were heavily disturbed but that cultural resources and materials found were sparse. Three radiocarbon dates indicate that the area is older than previously had been expected, dating back to between 7,407 and 7,998 BCE. Even though this is a very old site, the lack of soil changes and cultural materials recovered here indicate that the area is not a significant site. Anything that had potential significance was properly retrieved and analyzed.

Become a Member

BY DANTÉ FARENGA,
DEVELOPMENT & MARKETING DIRECTOR

Although San Diego County is home to more than 30,000 archaeological sites that provide valuable insight into the area's human history, many of these historical and scientific treasures do not receive proper care after excavation. The San Diego Archaeological Center is the only local facility dedicated to the curation of these artifacts. Your support preserves these cultural treasures and makes them available to both the public and researchers. Help share the stories that these artifacts have to tell by becoming a member.

Membership at the San Diego Archaeological Center entitles you to special membership advantages, such as free admission to the Museum, borrowing privileges for the Library, invitations to member events, discounts on lectures and workshops, and our monthly member newsletter.

Starting at the Sponsor level, Center Members are eligible for the ROAM (Reciprocal Organization of Associated Museums) program, which allows you to take your member benefits with you when you travel to other participating museums across the country including Member general admission for two and Member discounts in stores and restaurants.

Center Membership can be purchased [online](#), over the phone at 760-291-0370, or by sending a check made out to the San Diego Archaeological Center to the following address:

San Diego Archaeological Center
ATTN: Development Department
16666 San Pasqual Valley Road
Escondido, CA 92027

Thank you for your support!

Do you prefer a monthly payment plan instead of an annual membership? Join our Purveyors of the Past Monthly Giving Program. As a recurring donor, you will automatically receive Center membership as our gift to you.

Making recurring donations is quick and easy. Just select Monthly under Donation Frequency on our [online form](#). You may donate the amount that you are comfortable giving each month. No matter how big or small the sum, we consider every gift essential to sustaining the Center!

Corporate Membership



The San Diego Archaeological Center now offers access to our Job Seekers database as a benefit for our Corporate Members. This platform provides a database of qualified, entry-level applicants for field and laboratory work. Members can access the database, filter candidates, and request contact information.

Other Membership Benefits: In addition to access to the Job Seekers database, your company will be recognized in our e-newsletter, the Center website, and social media platforms. Membership is valid for one year from date of purchase.

How to Join: Corporate Membership starts at \$250 and can be purchased on our [website](#), over the phone at 760-291-0370, or by mailing a check made out to the San Diego Archaeological Center.

Shop and Support the SDAC

Are you practicing social distancing by shopping online instead? You can support the Center by shopping on [AmazonSmile](#). What an easy way to give back!

IN APPRECIATION

We are grateful for the time and talents, membership, donations, and in-kind support we received from 1/1/21 to 3/31/21.

Welcome New Members

Julian Alexander
Marilyn Rose Guida

Thank You for Your In-Kind Donations

Jeanne & James Bonk III
Bill Moramarco
Jim Royle

Thank You to Our Purveyors of the Past

Susie Arter
Karen Crawford
Kathy Dickey
James Eighmey
Susan Gilliland
Marty Rosen
Cindy Stankowski
Maureen Steiner

Thank You to Our Volunteers and Interns

Hayden Bruskotter
Vanessa Chappins
Linda Coulson
Kathy Dickey
Neah Johnson
Wanmei Liang
Bianca Loyola
Valerie Neale
Lexi Rogers
Jim Royle
Kathy Russell
Samantha Veasart

Thank You for Your Donations

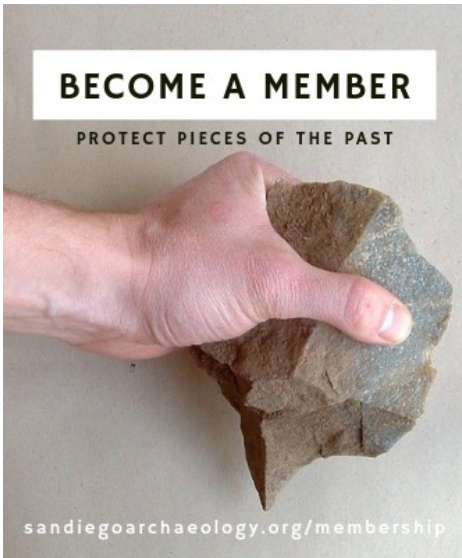
Dennis Gallegos
Helix Environmental Planning
Shannon Murphy
Jim Royle



The City of
SAN DIEGO

HELIX
Environmental Planning





BECOME A MEMBER

PROTECT PIECES OF THE PAST

sandiegoarchaeology.org/membership

The Center is the only local organization dedicated to the collection, study, curation and exhibition of San Diego County's archaeological artifacts. Your membership helps save our history and heritage. **Membership** can be purchased [online](#), over the phone, or by mail.

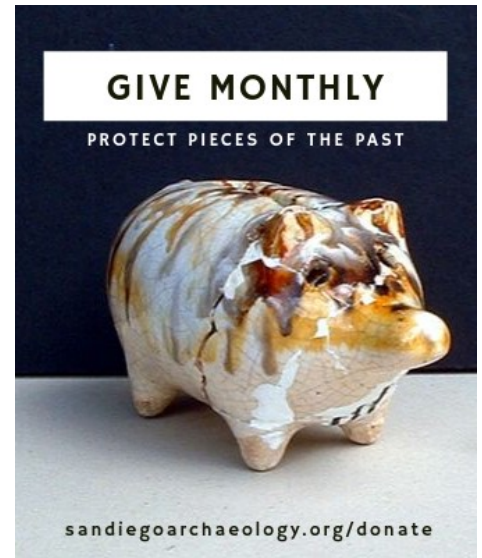


MAKE A DONATION

PROTECT PIECES OF THE PAST

sandiegoarchaeology.org/donate

Cash donations may be made to the Center by visiting our [website](#), or with a check made to the San Diego Archaeological Center. **In-kind gifts** are contributions of goods or services to our organization. Please [contact us](#) if you would like to make this type of donation.

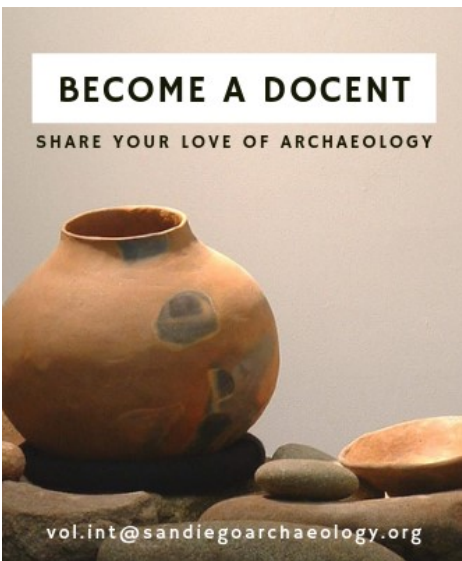


GIVE MONTHLY

PROTECT PIECES OF THE PAST

sandiegoarchaeology.org/donate

Purveyors of the Past Monthly Donation Program is an easy and convenient way of supporting the many important projects at the Center. You may determine the amount to donate per month and the specific campaign, project, or program to fund. Please [contact us](#) for more information.



BECOME A DOCENT

SHARE YOUR LOVE OF ARCHAEOLOGY

vol.int@sandiegoarchaeology.org

Docents welcome visitors and answer general questions regarding the Center and exhibits. Hours are flexible. To apply for a volunteer position for next year or for more information, please email vol.intern@sandiegoarchaeology.org.

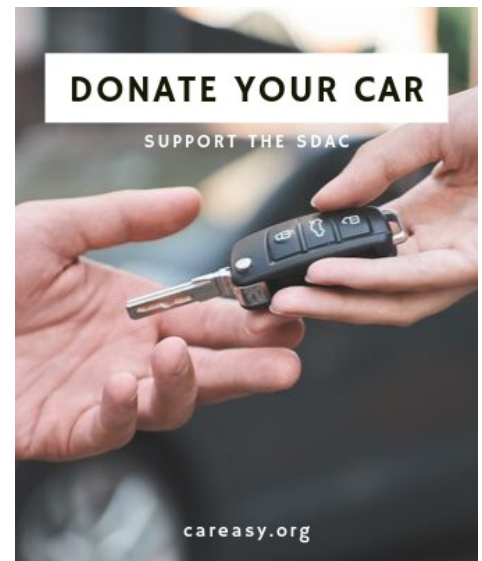


SHOP AMAZONSMILE

SUPPORT THE SDAC

smile.amazon.com

AmazonSmile lets customers enjoy the same wide selection, prices, and convenience as shopping as Amazon.com. When you [shop on AmazonSmile](#), the AmazonSmile Foundation will donate 0.5% of the purchase price to the Center.



DONATE YOUR CAR

SUPPORT THE SDAC

careasy.org

Purchasing a new car or truck this year? **Donate your old vehicle** to benefit the Center through the [C.A.R.S](#) program. Your generous gift is tax-deductible and will support the Center's exhibitions, programs, and curatorial efforts.



San Diego Archaeological Center

MUSEUM • EDUCATION • RESEARCH

CONTACT US

16666 San Pasqual Valley Road
Escondido, CA 92027
760-291-0370
sandiegoarchaeology.org

FOLLOW US

Facebook: [@SDArchCenter](https://www.facebook.com/SDArchCenter)
Twitter: [@sdac](https://twitter.com/sdac)
Instagram: [@sandiegoarchcenter](https://www.instagram.com/sandiegoarchcenter)



MARKETING

Every effort has been made to ensure the accuracy of the information in this e-newsletter. For corrections, please contact the editor, Danté Farenga, at dfarenga@sandiegoarchaeology.org.

BOARD OF TRUSTEES

James W. Royle, Jr. - President
Brian Williams, M.M.A., RPA - Vice President
Martin D. Rosen, M.A., RPA - Secretary
David Mayes - Treasurer
Donna Beddow, M.A., RPA
Rob Case, M.A., RPA
James Eighmey, M.A.
G. Timothy Gross, Ph.D.
Steve Lambert
Betsy Pain, M.A.
Michael Thacker

ADVISORY COUNCIL

Bruce Gallagher, Esq., Chair
Michael G. Baksh, Ph.D.
Stan Berryman, Ph.D.
James Bonk, III, CPA
Dennis Gallegos
Philip Goscienski, M.D.
Maureen Steiner, Esq.
Marsha Tepner

STAFF

Cindy Stankowski, M.A. - Executive Director
Danté Farenga - Development & Marketing Director
Jessica McPheters, M.A. - Collections Manager
Suzanne Moramarco - Collections & Library Specialist
Stephanie Sandoval, M.A. - Public Archaeology Director

