

THE CURATOR

Official E-newsletter of the San Diego Archaeological Center

Director's Message

BY STEPHANIE SANDOVAL, EXECUTIVE DIRECTOR

A big THANK YOU to all who came out to our Annual BBQ! It was a beautiful afternoon and great times were had thanks to live music by Head First, tasty food and drink, and fun for all ages. I hope you all walked away with your favorite auction item or two.

Your support at the BBQ and beyond plays a crucial role in enabling us to continue our mission to preserve archaeological collections and provide quality educational programs. We are truly grateful to all our supporters.

Each year, the Golden Trowel is awarded to recognize achievements and innovation in the practice of archaeology. It was no surprise that Cindy Stankowski was this year's recipient. She has decades of service working to preserve pieces of our shared human history, helping the public connect with the past, and leadership in the field of archaeological curation.



This event takes months of planning, and it would not have been possible without the commitment and hard work of all the volunteers, Board of Trustees, and SDAC staff who worked tirelessly to make the BBQ a success. Thank you to our platinum community sponsors ASM Affiliates and Jeanne and Jim Bonk as well as our gold community sponsors Captain Jim Bryant, Bruce & Carol Gallagher, Dr. G. Timothy Gross, Jim Royle, and Helix Environmental for their generous financial support.

Hope to see you all next year!

This issue:

Director's Message

PAGE 1

Public Archaeology

PAGE 2

Archive & Library

PAGE 3

Collections

PAGE 4

Development

PAGE 5

General Information

PAGE 8

Kids Dig: Breaking News in Archaeology

BY SAVANNAH CASTLEMAN, SDAC VOLUNTEER

Welcome back to Kids Dig, where our youngest community members can discover the latest news in archaeology.



Viking cemetery, Köping, Sweden. Photo credit: Arkeologerna Statens historiska museer

Have you ever seen a headstone at a cemetery? It usually marks that someone is buried there and tells you about the person. But what did people do if they didn't have a headstone to indicate a burial? In 823 AD, Vikings would place the sword of the deceased on the grave.



Upright swords, Köping, Sweden. Photo credit: Arkeologerna Statens historiska museer

While excavating a Viking cemetery in Köping, Swedish archaeologists uncovered a sword indicating a burial. The special thing about this

sword was the fact that it was vertically wedged in the earth. This action was thought to be a gesture to aid those who have died to reach Valhalla, which is Heaven in Norse mythology. This gesture also allowed for members of the family to find the grave easily and touch the sword to feel connected to the deceased. This practice is similar to that of current burial practices of putting a headstone to allow family members of the passed to visit their loved ones. Learn more in [this article](#) from the magazine *Archaeology*.

About Savannah Castleman

Currently, I attend San Diego State University and will complete my bachelors degree in anthropology this month. I intend to obtain my masters degree in anthropology with a focus in archaeology next semester. My passion is the archaeology of childhood, which studies the impact that children have on the archaeological record in order to provide a more in-depth analysis of a site. I plan to apply this perspective to both historical and prehistoric archaeology to pursue the notion that children reflect what they learn about the world and their culture through their actions and that those actions are displayed in the archaeological record.

My experiences in the field of archeology include field school as well as research. I attended an excavation in Palomar Mountain at the Nathan Harrison Serenity Ranch excavating the homestead of one of the most photographed San Diegans of the late nineteenth century. At the San Diego Archaeological Center, I learned the ins and outs of archaeological field techniques and lab methods, which furthered my love for archaeology. My goal is to work towards a Ph.D. and eventually run my own excavations around the world, emphasizing the perspective of childhood archeology and the overall impact children have had on past societies.

From the Stacks

BY SUZANNE MORAMARCO,
COLLECTIONS & LIBRARY TECHNICIAN

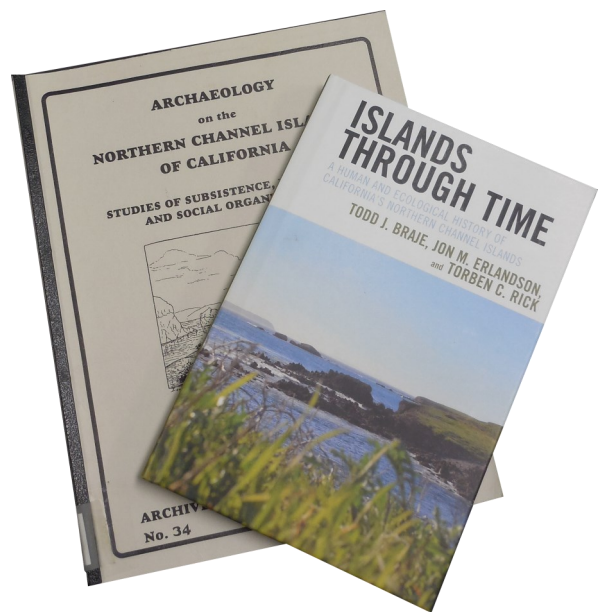
As Spring is upon us, I have been doing some spring cleaning in the library. This has given me the chance to reacquaint myself with many of the titles on our shelves. I am also reminded of the many tasks still needing to be done. If you find yourself with a few free hours a week or a month and would like to help, there is a task for you: reshelving titles; reorganizing the journal and magazine aisle; entering books, journals, magazines, and/or monographs into the library catalog; adding subjects to monograph entries; or repairing books and monographs. The library uses software by ResourceMate that is tailored to small museum, school, and church libraries. We have a video lesson on CD and SDAC manuals along with one-on-one training with the library technician. If you are interested in military history, our Fort Rosecrans archive could use some attention.



Or, if you would like to spend your free time learning more about topics covered in our Living Room Lecture series, here are some titles to go with the presentations made earlier this year. For [*Ideas About Baja California's Prehistory: A Personal Perspective*](#) by Don Laylander, we have two of his titles: *The Prehistory of Baja California: Advances in the Archaeology of the Forgotten Peninsula* and *Sources and Strategies for the Prehistory of Baja California*.

For [*A Human and Ecological History of California's Northern Channel Islands*](#) given by Todd Braje, we have the speaker's latest book *Islands through Time: A Human and Ecological History of the Northern Channel Islands*, and *Archaeology on the Northern Channel Islands of California: Studies of Subsistence, Economics, and Social Organization* edited by Michael A. Glassow.

For [*Animal Bones and Teeth: Stone Age Environments Revealed*](#) by Gillian Wong, we have several related titles including *Zooarchaeology: The Archaeology of Animals*, a print copy of a presentation by Lynne E. Christenson, and *The Analysis of Animal Bones from Archeological Sites (Prehistoric Archeology And Ecology)* by Richard G. Klein and Kathryn Cruz-Uribe.



The SDAC Library contains over 10,000 books, journals, magazines, and monographs. You can search our [online catalog](#) to see which titles are on our shelves. All patrons are welcome to look at library items on the premises. SDAC members can check out items as a benefit of membership, although not all titles are able to be checked out. Appointments to view or check out library materials can be made by calling Center Library Tech Suzanne Moramarco at 760-291-0370 or emailing library@sandiegoarchaeology.org.

New Acquisitions

BY JESSICA MCPHETERS, COLLECTIONS MANAGER

The San Diego Archaeological Center houses many prehistoric and historic collections from the San Diego County adjacent regions. The Center is equipped with over 5,000 square feet of vault space that allow us to provide long-term curation and care for a wide range of archaeological materials, including artifacts, ecofacts, maps, photographs, and site records. Partnering with local colleges and universities provides a setting for volunteers and students interested in archaeology to gain hands-on experience working with archaeological collections.



Catalog Number: SDI-11799-2022-51

Material Class: Historic

Object Type: Bolt

Material: Metal

Quantity: 1

Weight: 61.9 grams

Have you checked out our virtual exhibit [New Acquisitions](#)? Take a behind-the-scenes peek at our most recently acquired collections and learn more about their research and contribution to the archaeological record of San Diego County. To accompany this exhibit, each month the collections blog [New Acquisitions: A Closer Look](#) will dig deeper into the collections being curated for long term stewardship and

preservation, the research value they provide, and the importance of archaeology in San Diego County.



Catalog Number: SDI-17963-2022-253

Material Class: Chipped stone

Object Type: Tool

Material: Metavolcanic

Quantity: 1

Weight: 111.26 grams

The new acquisition SDAC 756 came into the Center in September 2022. This project was contracted by a developer in the Otay Mesa area of San Diego County, near the Mexican border. Three significant sites were identified for mitigation on this project. CA-SDI-8081, CA-SDI-11799, and CA-SDI-17963 include two prehistoric sites and one historic site. Time periods connected with these sites are Archaic and Late Prehistoric, and the historic items recovered are from the early twentieth century. Field methodologies included the initial resource study which began in 2006 and was completed in 2009; an updated survey program in 2022 to discern if any major impacts had changed since the 2009 study; a phase I excavation in 2022 focused on the indexing of each site using a grid network; and a phase II data recovery that focused study on locations that had the highest research potential.

To find out more, visit our virtual exhibit [New Acquisitions](#) and our blog [New Acquisitions: A Closer Look](#) now. For questions regarding Center collections, please contact the Collections Department by email at collections@sandiegoarchaeology.org.

Spring into Membership

BY DANTÉ FARENGA,
DEVELOPMENT & MARKETING DIRECTOR

Spring is the perfect time to join the Center or renew your membership. We have added exciting new benefits to our membership levels plus the option to choose between an annual membership or monthly membership payment plan.

Now you can select the membership level that offers you the benefits you want most. In addition to new annual benefits, higher level members can choose additional one-time benefits including complimentary event tickets, behind the scenes tours, a field visit with an archaeologist, and more. You can find the full list of benefits on our [Membership](#) page.

For current SDAC members, our new benefit packages take effect upon your next membership renewal. If you would like to gain access to these benefits now, please renew your membership early. The remaining months from your current membership will be added to your new level.

You can also choose either an annual membership or a monthly membership at any membership level. You will receive all the member benefits of that level, regardless of which payment option you select.

Your support is vital to preserving the past for the benefit of future generations. At the Center, we care for over one million artifacts from archaeological sites throughout San Diego County. This process includes inventorying, organizing, and creating documentation for newly acquired collections in addition to maintaining around-the-clock security, inspections, and oversight of all collections to ensure long-term preservation. We also share local archaeology with the public through museum exhibits, lectures, workshops, school programs, and virtual content. An annual or monthly membership to

the Center is a fun, rewarding way to support these efforts.

You can join or renew your membership on our [website](#). Annual memberships can also be purchased over the phone or by mailing a check. For questions about SDAC membership, please contact Development & Marketing Director Danté Farenga at dfarenga@sandiegoarchaeology.org.

The Big Exchange



Membership has its benefits—especially during The Big Exchange. Through May 18, you can use your SDAC membership card to visit local museums for free.

The Big Exchange offers members of the San Diego Archaeological Center reciprocal admission at more than forty museums, historic sites, gardens, and more throughout San Diego County.

Simply head to one of the participating museums, tell the guest services representative that you are there for “The Big Exchange,” then show your member card from the SDAC for complimentary reciprocal admission.

More information, including a list of participating museums, can be found on the [San Diego Museum Council website](#).

The Big Exchange is presented by the San Diego Museum Council and San Diego County Membership Manger Collaborative.

IN APPRECIATION

We are grateful for the time and talents, membership, donations, and in-kind support we received from 1/1/23 to 4/30/23.

Thank You for Your Donations

\$1,000+

ASM Affiliates
Jeanne & Jim Bonk, III
Jim Bryant
James & Sandra Cole
Jim Royle

\$500+

Bruce & Carol Gallagher
Dr. G. Timothy Gross
Helix Environmental Planning

\$100+

Ana Brill
Lynne Jett
Steve Lambert
Legacy 106, Inc.
Teodora Podesta
Marty Rosen
Rachel Ruston
Marsha Tepner
Mike Thacker

Thank You to Our Monthly Donors, Purveyors of the Past

Susie Arter
Karen Crawford
Kathy Dickey
James Eighmey
Susan Gilliland
Dr. G. Timothy Gross
Marty Rosen
Cindy Stankowski
Maureen Steiner



Commission for
Arts and Culture

Thank You for Your Membership

\$150+

Chris O'Connor
PanGIS, Inc.
William Deen Parke

Thank You for Your In-Kind Donations

\$250+ value

Jeanne & Jim Bonk, III
Kathleen Dickey
Dr. G. Timothy Gross
Betsy Pain
San Dieguito River Valley Conservancy

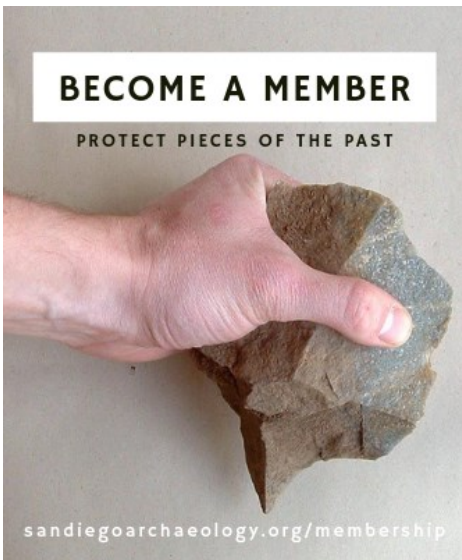
Thank You to Our Volunteers and Interns

Olivia Benchetrit	Chris O'Connor
Chris Blake	Britt Perez
Ana Brill	Madison Power
Cole Carrillo	Mari Ridenour
Savannah Castleman	Jim Royle
Linda Coulson	Heidi Scarlett
Grace Dearborn	James Sinclair
Serena Diaz	Carol Smock
Will Gallegos	Mike Thacker
David Gauss	Elaine Wang
Meagan McCarthy	Jordan Wardle
Kristina Moore	Tim Wolfe
Adam Niesley	Valerie Zermenon

Legacy
106^{INC.}

HELIX
Environmental Planning



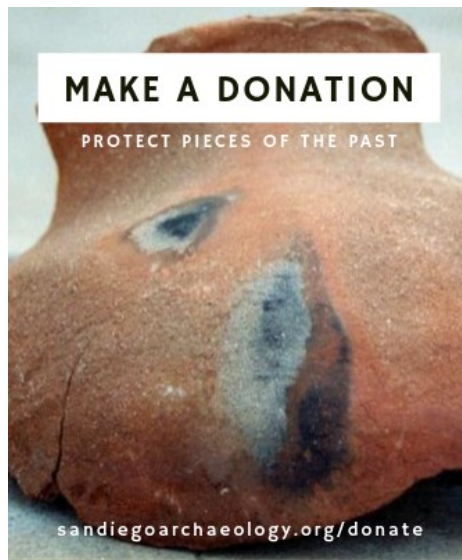


BECOME A MEMBER

PROTECT PIECES OF THE PAST

sandiegoarchaeology.org/membership

The Center is the only local organization dedicated to the collection, study, curation and exhibition of San Diego County's archaeological artifacts. Your membership helps save our history and heritage. **Membership** can be purchased [online](#), over the phone, or by mail.

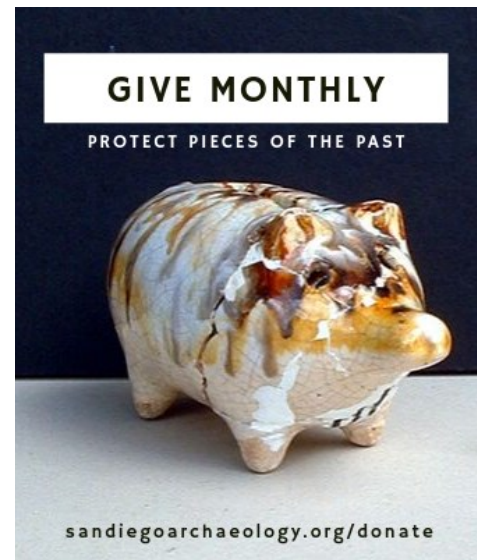


MAKE A DONATION

PROTECT PIECES OF THE PAST

sandiegoarchaeology.org/donate

Cash donations may be made to the Center by visiting our [website](#), or with a check made to the San Diego Archaeological Center. **In-kind gifts** are contributions of goods or services to our organization. Please [contact us](#) if you would like to make this type of donation.

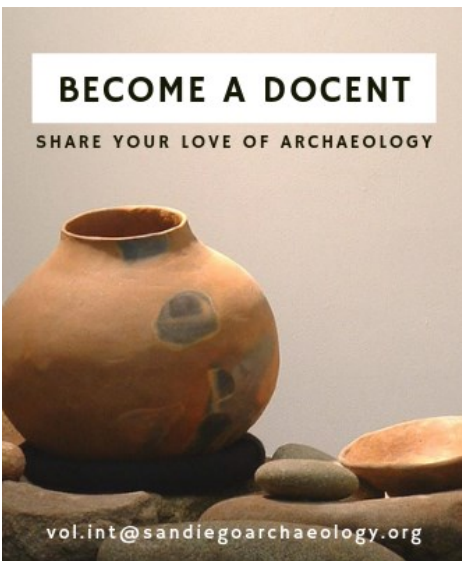


GIVE MONTHLY

PROTECT PIECES OF THE PAST

sandiegoarchaeology.org/donate

Purveyors of the Past Monthly Donation Program is an easy and convenient way of supporting the many important projects at the Center. You may determine the amount to donate per month and the specific campaign, project, or program to fund. Please [contact us](#) for more information.



BECOME A DOCENT

SHARE YOUR LOVE OF ARCHAEOLOGY

vol.int@sandiegoarchaeology.org

Docents welcome visitors and answer general questions regarding the Center and exhibits. Hours are flexible. To apply for a volunteer position or for more information, please email vol.intern@sandiegoarchaeology.org.

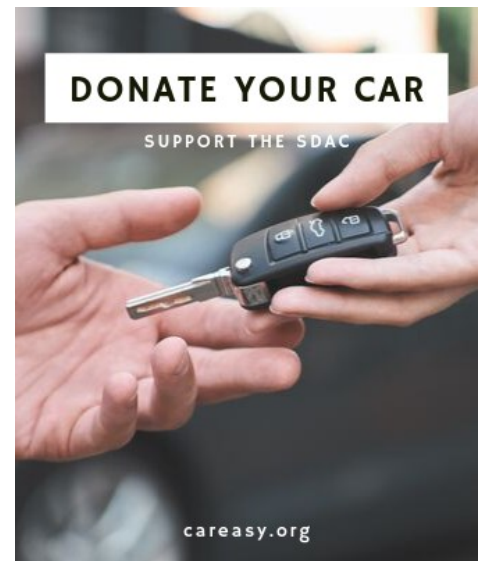


SHOP AMAZONSMILE

SUPPORT THE SDAC

smile.amazon.com

Unfortunately, the **AmazonSmile** program has been discontinued. However, we would like to thank everyone who supported the San Diego Archaeological Center through their purchases over the past decade.



DONATE YOUR CAR

SUPPORT THE SDAC

careasy.org

Purchasing a new car or truck this year? **Donate your old vehicle** to benefit the Center through the [C.A.R.S.](#) program. Your generous gift is tax-deductible and will support the Center's exhibitions, programs, and curatorial efforts.



San Diego Archaeological Center

MUSEUM • EDUCATION • RESEARCH

CONTACT US

16666 San Pasqual Valley Road
Escondido, CA 92027
760-291-0370
sandiegoarchaeology.org

FOLLOW US

Facebook: [@SDArchCenter](https://www.facebook.com/SDArchCenter)
Twitter: [@sdac](https://twitter.com/sdac)
Instagram: [@sandiegoarchcenter](https://www.instagram.com/sandiegoarchcenter)
YouTube: [San Diego Archaeological Center](https://www.youtube.com/San Diego Archaeological Center)



MARKETING

Every effort has been made to ensure the accuracy of the information in this e-newsletter. For corrections, please contact the editor, Danté Farenga, at dfarenga@sandiegoarchaeology.org.

BOARD OF TRUSTEES

G. Timothy Gross, Ph.D. - President
Brian Williams, M.M.A., RPA - Vice President
Jim Royle, S.M. - Secretary
Teodora Podesta, M.A. - Treasurer
Cheryl Bowden-Renna
Ana Brill, M.S.
James Eighmey, M.A.
Bailey Jagers
Betsy Pain, M.A.
Jon Spenard, Ph.D.
Mike Thacker
Michael Vader, M.A.

ADVISORY COUNCIL

Bruce Gallagher, Esq., Chair
Michael G. Baksh, Ph.D.
Stan Berryman, Ph.D.
James Bonk, III, CPA
Dennis Gallegos
Philip Goscienski, M.D.
Maureen Steiner, Esq.
Marsha Tepner

STAFF

Stephanie Sandoval, M.A. - Executive Director
Danté Farenga - Development & Marketing Director
Jessica McPheters, M.A. - Collections Manager
Suzanne Moramarco - Collections & Library Technician



Commission for Arts and Culture