

# THE CURATOR

Official E-newsletter of the San Diego Archaeological Center

## Director's Message

BY CINDY STANKOWSKI, EXECUTIVE DIRECTOR

When someone asks me, "What is your favorite artifact?" I usually answer, "The one I just had in my hand." They are all so interesting and tell a story.

Recently, I was working on a collection excavated in downtown San Diego. The site included a hotel, once known as the Eureka Hotel and then the Ocean House. The project was conducted by ASM Affiliates, a local archaeology firm known for their excellent work. The collection, which contains over 1,200 items from the mid to late 1800s, includes everyday objects that lend insight into people's daily lives.



Uranium glass under florescent light (left) and UV light (right)

I discovered a fragment of a pressed glass vase in an odd color, sort of a yellow-green. I had my suspicions and, after testing with a UV light, I was correct! We had a piece of uranium glass, the first we know of in our collections.

Uranium glass contains a small amount of uranium in the form of an oxide. Glass makers added it to glass to color it yellow. Uranium glass can register above background with a sensitive Geiger counter. (We don't have one of those at the Center.) It is often is a pale, yellowish-green and is also called Vaseline glass for its similarity in color to the ointment.

This little glass fragment made my day. On to my next favorite artifact.

## This issue:

Director's Message

PAGE 1

Public Archaeology

PAGE 2

Archive & Library

PAGE 3

Collections

PAGE 4

Development

PAGE 5

General Information

PAGE 8

# Kids Dig: Breaking News in Archaeology

BY STEPHANIE SANDOVAL,  
PUBLIC ARCHAEOLOGY DIRECTOR

Welcome back to Kids Dig, where our youngest community members can discover the latest news in archaeology.

What did you find the last time you were hungry? Hopefully something edible! It was just reported that a hungry European badger (*Meles meles*) led archaeologists to a stash of Roman coins in a cave near Grado, Spain. After a harsh winter storm, researchers think a badger unearthed ninety ancient coins in the process of searching La Cuesta cave for food. Thankfully they were not tasty enough to eat!



European badger

During excavations of the cave, archaeologists found a total of 209 coins dating from 200 to 400 CE. These coins, made of copper and bronze, were minted or produced at various locations across the Roman Empire, including modern-day Turkey, Greece and the United Kingdom.

A collection of gold coins from the rule of Constantine had been discovered nearby around 85 years ago. Some suggest that refugees fleeing conflict in the region may have stashed the coins for safe keeping.



La Cuesta Cave, Spain. Credit: Alfonso Fanjul Peraza

To find out more about this amazing discovery, check out [Hungry Badger](#).



Roman coins found. Credit: Alfonso Fanjul Peraza

## Upcoming Events





## From the Stacks

BY VANESSA CHAPPINS, COLLECTIONS TECHNICIAN

The San Diego Archaeological Center archive and library resources are available to students, professors, CRM representatives, members, and others who are just interested in expanding their knowledge of San Diego County. A wide variety of undergraduate and graduate student research projects have been conducted at the Center with the assistance of Center staff.



As part of our efforts to make our archaeological collections accessible for research, we can provide those who are interested with appropriate archival materials and library resources to facilitate their research projects.

We invite researchers, graduate students, and undergraduate students to contact us about project ideas, equipment, and materials. If you are interested in pursuing a research project involving Center collections, please email [collections@sandiegoarchaeology.org](mailto:collections@sandiegoarchaeology.org).

## Fascinating Finds

The Center Library recently received a donation of historic maps from local archaeologist Dr. G. Timothy Gross. Current library volunteers and interns have expressed how the maps helped to shed light on points of interest in the City of San Diego during the 1940s.



If you are interested in donating items to the Center Library, you can submit a completed [Collections Donation Form](#) describing the material you wish to donate. Once you have filled out the donation form, please email it to [collections@sandiegoarchaeology.org](mailto:collections@sandiegoarchaeology.org). Then we can check our library catalog to see if the titles are needed. Please note: We cannot accept unsolicited donations without a donation form. You can find more information on our donation policy on our [website](#).

## Recycled Knowledge

Museum guests can experience the story of how people have lived in San Diego County for the past 12,000 years through our exhibitions. While you are here, don't forget to check out our recycled knowledge section of our gift shop. You can find gently used books and magazines on topics ranging from local birds to outer space.

## Most Memorable Artifacts

BY VANESSA CHAPPINS, COLLECTIONS TECHNICIAN

The San Diego Archaeological Center houses over 700 prehistoric and historic collections from all over San Diego County. Here, these artifacts are curated and available for study and exhibition. At the Center, we have the opportunity to partner with local colleges and universities to provide a setting for students interested in gaining hands-on experience in Collections Management, Collections Research, Development and Marketing, GIS, Library Science, and Public Archaeology. In the process, interns and volunteers come across different types of artifacts ranging from ceramics, flakes, historic bottles, and so much more! Here are a few artifacts that have stood out to our interns and volunteers as they prepare their collections.



This historic artifact is made of ironstone whiteware with the addition of a gold overglaze pattern. Intern Ryan Eble chose this piece as his favorite artifact in his collection because it allowed him to literally put together pieces of the past and infer what it could be. By examining the site report and reassembling the shattered pieces, it was determined that this artifact is a bowl used for various purposes.



These historic artifacts are made of ceramic, stoneware, and porcelain. Each design is inspired by an organic element such as flowers, vines, and leaves. Intern Kristina Moore considers these artifacts her favorite as a result of the intricate designs and how these colors remain vibrant even today.



The Center is highly appreciative of all our interns and volunteers and how they share their excitement with us about artifacts in their collections.

Are you interested in becoming a volunteer or intern at the Center? Although the lab is currently full for the spring semester, we will continue accepting applications for those interested in summer positions. To apply, please email a letter of interest and CV to the collections staff at [collections@sandiegoarchaeology.org](mailto:collections@sandiegoarchaeology.org).

## Thank You for Your Support on #GivingTuesday

BY DANTÉ FARENGA,  
DEVELOPMENT & MARKETING DIRECTOR

We would like to thank everyone for your generosity last year for #GivingTuesday and our end-of-year Annual Appeal campaign. On November 30, we were able to surpass our goal of \$8,000 and raise \$12,555 to purchase the equipment and software needed to create 3-D scans of our collections. Thank you for helping make our collections more accessible to researchers, students, cultural resource management professionals, and the public. We would also like to thank Dr. Jon Spenard for providing a demonstration of this technology at our live virtual event in November. In March, Dr. Spenard's students from California State University San Marcos will help us begin this project by creating 3-D scans of children's toys for an upcoming virtual and in-person exhibit.



With your support, we were able to raise an additional \$10,307 in December for our Annual Appeal campaign to support educational programs for all ages, upcoming exhibits on local archaeology, curation, and daily operations.

## Save the Date



Save the date for an afternoon of food, amusement, and music in support of the Center. Returning after a two-year hiatus, our Annual BBQ is back! Guests will enjoy BBQ fare courtesy of local restaurant H Brothers, local craft beer, and live music. The Center will also present the Golden Trowel Award for excellence in archaeology, recognize outstanding volunteers, and offer a silent auction.

Proceeds from this event provide funding for K-12 field trips and virtual programs, adult lectures and workshops, museum exhibits, curation, and more throughout the year. Stay tuned for more details coming soon.

## Monthly Giving

Do you prefer a monthly payment plan instead of an annual membership? Join our Purveyors of the Past Monthly Giving Program. As a recurring donor, you will automatically receive Center membership as our gift to you.

Making recurring donations is quick and easy. Just select Monthly under Donation Frequency on our [online form](#). You may donate the amount that you are comfortable giving each month. No matter how big or small the sum, we consider every gift essential to sustaining the Center!



## IN APPRECIATION

We are grateful for the time and talents, membership, donations, and in-kind support we received from 10/1/21 to 12/31/21.

### Thank You for Your Donations

Anonymous  
Travis Armstrong  
Donna Beddow  
Jeanne & Jim Bonk, III  
Ana Brill  
Capt. Jim & Monica Bryant  
Slader Buck  
Rob & Patricia Case  
Keith Chan  
Sandra & James Cole  
Diane Barlow Coombs  
Bruce & Carol Gallagher  
Dennis Gallegos  
Laura Gonzalez  
Ken Hedges & Diane Hamann  
Christopher Khoury  
Miriam Kirk  
Steve Lambert  
Bill & Carol Mahler  
Joanna & Patrick Masters  
Shannon Murphy  
Beth & Chris Padon  
Betsy Pain  
Glen Perelson  
Pfizer Foundation  
Teodora Podesta  
Dr. Eleanora Robbins  
Jim Royle  
Henry J. Sander Donor-Advised Fund  
Stephanie Sandoval  
Gerald Shiller  
Dr. Jon Spenard  
Peter Sullins  
Adriana Tamayo  
Mary Anne & Donald Thacker  
Mike Thacker  
Tierra Environmental Services  
Chris & Mary Vedborg  
Chris White  
Brian Williams  
Tim Wolfe

### Thank You to Our Purveyors of the Past

Susie Arter  
Karen Crawford  
Kathy Dickey  
James Eighmey  
Susan Gilliland  
Dr. G. Timothy Gross  
Marty Rosen  
Cindy Stankowski  
Maureen Steiner

### Thank You for Your In-Kind Donations

Brenda Townsend  
Jim Royle

### Welcome New Members

Paul Bicanic  
Amanda Moore  
Bruce Moore  
Douglas Platt  
Robin Quasebarth  
Alysa Ransom  
RECON Environmental  
John Rigby  
Alan Schmidt  
Julie Wells  
Dr. Omer Whitman

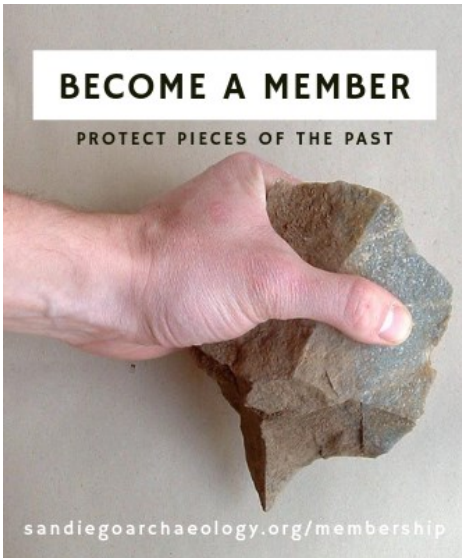
### Thank You to Our Volunteers and Interns

Olivia Benchetrit  
Chris Blake  
Dylana Buchanan  
Ciara Chevannes  
Kassandra Contreras  
Linda Coulson  
Kathy Dickey  
David Gauss  
Sarah Goldstein  
Neah Johnson  
Bianca Loyola  
Meagan McCarthy  
Kellen McClard  
Kristina Moore  
Belyn Naquin  
Chris O'Connor  
JP Oliveira  
Melanie Parker  
Marty Rosen  
Jim Royle  
Kathy Russell  
Amanda Sheley  
Russell Silberberger  
Carol Smock  
Valerie Zermeno



RECON



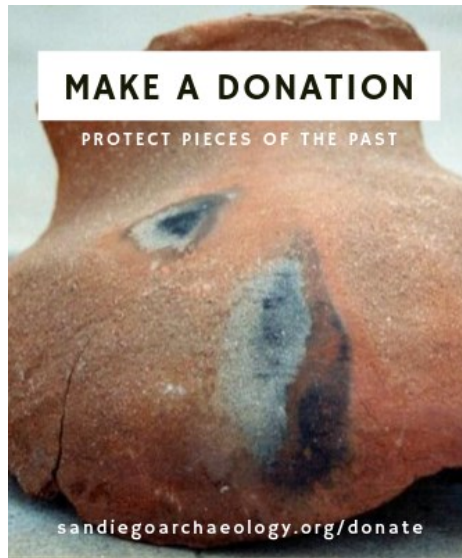


## BECOME A MEMBER

PROTECT PIECES OF THE PAST

[sandiegoarchaeology.org/membership](http://sandiegoarchaeology.org/membership)

The Center is the only local organization dedicated to the collection, study, curation and exhibition of San Diego County's archaeological artifacts. Your membership helps save our history and heritage. **Membership** can be purchased [online](#), over the phone, or by mail.

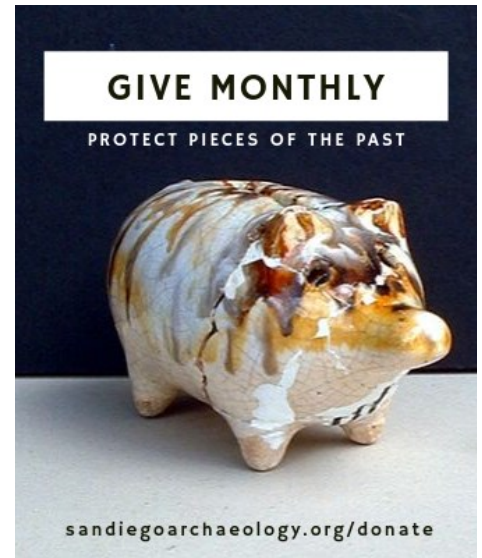


## MAKE A DONATION

PROTECT PIECES OF THE PAST

[sandiegoarchaeology.org/donate](http://sandiegoarchaeology.org/donate)

**Cash donations** may be made to the Center by visiting our [website](#), or with a check made to the San Diego Archaeological Center. **In-kind gifts** are contributions of goods or services to our organization. Please [contact us](#) if you would like to make this type of donation.

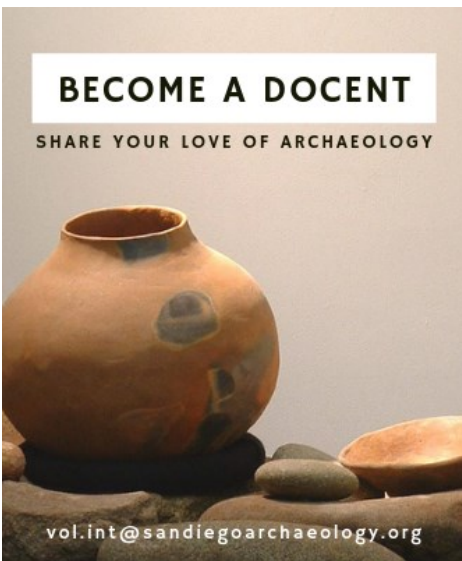


## GIVE MONTHLY

PROTECT PIECES OF THE PAST

[sandiegoarchaeology.org/donate](http://sandiegoarchaeology.org/donate)

**Purveyors of the Past Monthly Donation Program** is an easy and convenient way of supporting the many important projects at the Center. You may determine the amount to donate per month and the specific campaign, project, or program to fund. Please [contact us](#) for more information.



## BECOME A DOCENT

SHARE YOUR LOVE OF ARCHAEOLOGY

[vol.int@sandiegoarchaeology.org](mailto:vol.int@sandiegoarchaeology.org)

**Docents** welcome visitors and answer general questions regarding the Center and exhibits. Hours are flexible. To apply for a volunteer position or for more information, please email [vol.intern@sandiegoarchaeology.org](mailto:vol.intern@sandiegoarchaeology.org).

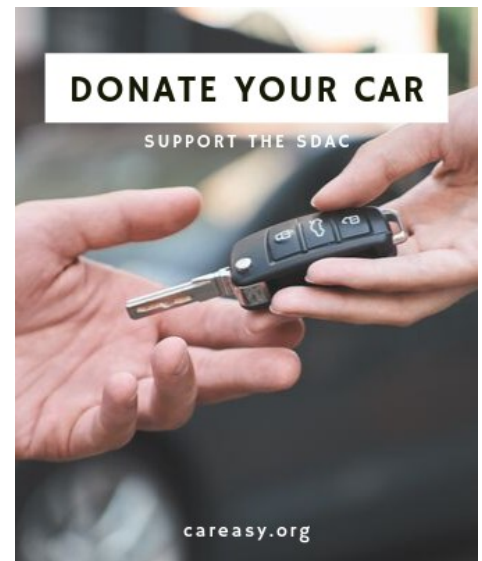


## SHOP AMAZONSMILE

SUPPORT THE SDAC

[smile.amazon.com](http://smile.amazon.com)

**AmazonSmile** lets customers enjoy the same wide selection, prices, and convenience as shopping as Amazon.com. When you [shop on AmazonSmile](#), the AmazonSmile Foundation will donate 0.5% of the purchase price to the Center.



## DONATE YOUR CAR

SUPPORT THE SDAC

[careasy.org](http://careasy.org)

Purchasing a new car or truck this year? **Donate your old vehicle** to benefit the Center through the [C.A.R.S.](#) program. Your generous gift is tax-deductible and will support the Center's exhibitions, programs, and curatorial efforts.



# San Diego Archaeological Center

MUSEUM • EDUCATION • RESEARCH

## CONTACT US

16666 San Pasqual Valley Road  
Escondido, CA 92027  
760-291-0370  
[sandiegoarchaeology.org](http://sandiegoarchaeology.org)

## FOLLOW US

Facebook: [@SDArchCenter](https://www.facebook.com/SDArchCenter)  
Twitter: [@sdac](https://twitter.com/sdac)  
Instagram: [@sandiegoarchcenter](https://www.instagram.com/sandiegoarchcenter)



## MARKETING

Every effort has been made to ensure the accuracy of the information in this e-newsletter. For corrections, please contact the editor, Danté Farenga, at [dfarenga@sandiegoarchaeology.org](mailto:dfarenga@sandiegoarchaeology.org).



## BOARD OF TRUSTEES

G. Timothy Gross, Ph.D. - President  
Brian Williams, M.M.A., RPA - Vice President  
Martin D. Rosen, M.A., RPA - Secretary  
Teodora Podesta, M.A. - Treasurer  
Donna Beddow, M.A., RPA  
Cheryl Bowden-Renna  
Ana Brill, M.S.  
James Eighmey, M.A.  
Bailey Jagers  
Stephen F. Lambert  
Betsy Pain, M.A.  
Jon Spenard, Ph.D.  
Michael Thacker

## ADVISORY COUNCIL

Bruce Gallagher, Esq., Chair  
Michael G. Baksh, Ph.D.  
Stan Berryman, Ph.D.  
James Bonk, III, CPA  
Dennis Gallegos  
Philip Goscienski, M.D.  
Maureen Steiner, Esq.  
Marsha Tepner

## STAFF

Cindy Stankowski, M.A. - Executive Director  
Stephanie Sandoval, M.A. - Deputy Director  
Vanessa Chappins - Collections Technician  
Danté Farenga - Development & Marketing Director  
Jessica McPheters, M.A. - Collections Manager  
Suzanne Moramarco - Collections & Library Specialist

