

THE CURATOR

Official E-newsletter of the San Diego Archaeological Center



Director's Message

BY STEPHANIE SANDOVAL, EXECUTIVE DIRECTOR

If this past weekend was any indication, the future of archaeology is in good hands. On Saturday, SDAC hosted a student symposium on the Los Peñasquitos Ranch House in commemoration of its bicentennial celebration later this month. Recent graduates and current students of the archaeology programs at San Diego City College and Palomar College gave poster presentations relating to their work on the school-led excavations.

The courage it takes to clearly and confidently present to an audience that includes local experts is not easily had and belied their young careers. Their research ranged from faunal analysis and animal husbandry to historic ceramics, glass, and ammunitions, and it included a fascinating deep dive into the Swan Brand salt out of Liverpool.

During the Q&A panel, it was a pleasure to hear about those early experiences when archaeology takes hold of a future professional, or catching the "bug," as it was called. There is a bit of nostalgia in hearing those stories since many of us can relate. Most of the students have already moved on to more advanced study, CRM positions, or other related fields. As they all credited their professors for giving them the archaeology "bug" and setting them on their current path, it reminds us how important it is that those who teach also inspire.

A big thank you to those students and professors - the future looks bright!



Photo by Chris Blake: Dr. Timothy Gross, Mandie Carter, Kimberly Applebaum, Brianna Hartley, Ajeng McCunney, Lizzie Ramirez, Blake Gergeouses, Kimberly Algya, and Prof. Betsy Pain

This issue:

Director's Message

PAGE 1

Public Archaeology

PAGE 2

Archive & Library

PAGE 3

Collections

PAGE 4

Development

PAGE 5

General Information

PAGE 8

Kids Dig: Breaking News in Archaeology

BY VANESSA CHAPPINS,
PUBLIC ARCHAEOLOGY COORDINATOR

Welcome back to Kids Dig, where our youngest community members can discover the latest news in archaeology.



The burial chamber of Khety where the crocodile remains were primarily placed. Credit: M. Jawornicki/PCMA UW

It is common for us to hold onto a favorite toy or piece of clothing, or even create a time capsule that holds all your special items of your childhood to later be uncovered. What are you going to hold onto for the future? Whatever you pick can tell a lot about you.



Mortuary temple of Hatshepsut, Luxor, Egypt

The idea of holding onto items that carry meaning was very common for the Ancient Egyptians, and one very special discovery will challenge us to rethink what we know about their temples.

Fragments from nine crocodile heads were recovered from two tombs located near the Temple of Hatshepsut in the North Asasif necropolis. The remains of these crocodiles are unique in that they were not mummified but simply buried next to Cheti, an official during the reign of Mentuhotep II (r. 2051 to 2000 B.C.E.). The reason behind the un-mummified crocodiles' burial is still unknown, but archaeologists guess that they served as protection for those in the afterlife from the deity Sobek-Ra. Learn more in [this article](#) from the magazine *Archaeology*.

Upcoming Events

Hear Cindy Stankowski share the [Untold Story of San Diego's Working Class in the 1880s](#). Looking for local art or want to create your own? Join local artists of Open Studio Art for an [Exhibition](#), artist talk, and [Still Life Painting Workshop](#) inspired by local artifacts from the Center's collections. Look for more exciting events to come!

BLOCK 112: THE UNTOLD STORY OF SAN DIEGO'S WORKING CLASS IN THE 1880S



February 1, 2023
6:30 PM ~ online

SDAC WELCOMES | OPEN STUDIO ART

Still Life Painting Workshop

When
4th FEB 2023
2pm - 4pm

Where
San Diego
Archaeological Center

Fee
\$5 Ages 13-17
\$10 Adult

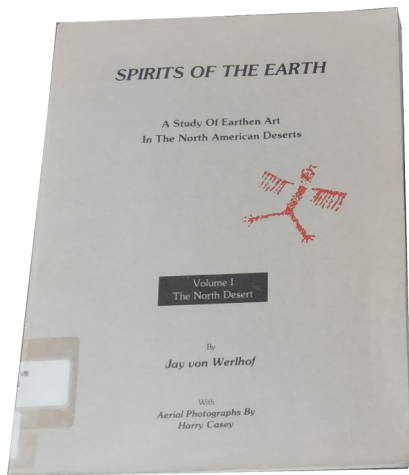
Instructor—Jean Wheat

An illustration of a person sitting at a table, painting a still life on a canvas. The scene includes a vase, a bowl, and a sunflower. The person is wearing a yellow shirt and blue pants.

From the Stacks

BY SUZANNE MORAMARCO,
COLLECTIONS & LIBRARY TECHNICIAN

Have you watched one of our Living Room Lectures and found yourself wanting to know more about some aspect of the talk? Here are some titles from the SDAC Library to help you get started.

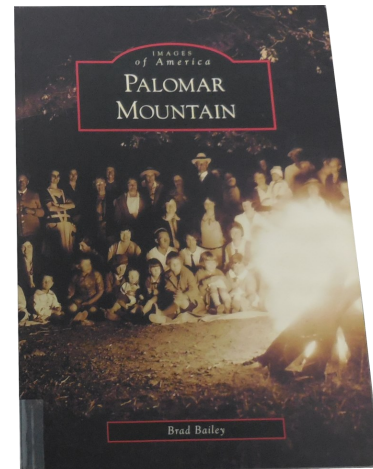


For [Geoglyphs of the Desert Southwest](#) presented by Anne Morgan, a search on geoglyphs will bring up *Spirits of The Earth Vol. 1: A Study of Earthen Art in the North American Deserts* by Jay Von Werlthof and Harry Casey and *Lines to the Mountain Gods: Nazca And The Mysteries Of Peru* by Evan Hadingham. You can also purchase the book by Anne Morgan and Harry Casey in our gift shop.

Stan Berryman, in [Looking Down the Rabbit Hole: Santee Greens Revisited](#), mentions a title by Andy Pigniollo. Although we do not have that title, we do have *Lithic Material Types as a Chronological Indicators in the Archaeological Record of San Diego County* by Pigniollo. To learn more about projectile points, there are many titles, including *Early Man Projectile Points in the Southwest (Popular Series Pamphlet No. 4)* by Kenneth Honea. For radiocarbon dating, there is *Culture Phase Divisions Suggested by Typological Change Coordinated with Stratigraphically Controlled Radiocarbon Dating at San Diego* by James R. Moriarty.

For [Communing with Earth and Ancestors: Ancient Maya Cave Rituals](#) presented by Dr. Jon Spenard, some of the titles you will find are *Pre Columbian Water Management: Ideology, Ritual, and Power* by Lisa Joyce Lucero and Barbara W. Fash, and *A Forest of Kings: The Untold Story of the Ancient Maya* by Linda Schele and David Freidel.

For [New Insights from the Nathan Harrison Historical Archaeology Project](#) by Seth Mallios, to explore the mountain Harrison called home you'll find *Palomar Mountain (Images of America)* by Brad Bailey. To better understand racial aspects of Harrison's time period, read *California's Black Pioneers: A Brief Historical Survey* by Kenneth G. Goode. You can also purchase Seth Mallios' book in our gift shop.



These are just some of the titles that came up in searches of the topics found in the Living Room Lectures. The SDAC Library contains over 10,000 books, journals, magazines, and monographs. You can search our [online catalog](#) to see which titles are on our shelves. All patrons are welcome to look at library items on the premises. SDAC members can check out items as a benefit of membership, although not all titles are able to be checked out. Appointments to view or check out library materials can be made by calling Center Library Tech Suzanne Moramarco at 760-291-0370 or emailing library@sandiegoarchaeology.org.

New Acquisitions

BY JESSICA MCPHETERS, COLLECTIONS MANAGER

The San Diego Archaeological Center houses many prehistoric and historic collections from the San Diego County adjacent regions. The Center is equipped with over 5,000 square feet of vault space that allow us to provide long-term curation and care for a wide range of archaeological materials, including artifacts, ecofacts, maps, photographs, and site records. Partnering with local colleges and universities provides a setting for volunteers and students interested in archaeology to gain hands-on experience working with archaeological collections.



Catalog Number: SDI-8081-2010-05
Material Class: Shell, unmodified
Object Type: Bulk
Material: Chione sp.
Quantity: 1
Weight: 29.7 grams

Have you checked out our virtual exhibit [New Acquisitions](#)? Take a behind-the-scenes peak at our most recently acquired collections and learn more about their research and contribution to the archaeological record of San Diego County. To accompany this exhibit, each month the SDAC social media ([Instagram](#), [Twitter](#), and

[Facebook](#)) along with the collections blog [New Acquisitions: A Closer Look](#) will dig deeper into the collections being curated for long term stewardship and preservation, the research value they provide, and the importance of archaeology in San Diego County.



Catalog Number: SDI-8081-2010-05
Material Class: Chipped Stone
Object Type: Debitage
Material: Metavolcanic
Quantity: 1
Weight: 1.4 grams

January 2023's featured project was SDAC 755 from Otay Mesa, excavated in 2022. Archaeologists look through all past data recorded from sites prior to conducting their data recovery. Their goal is to add to the research that already exists and, by doing so, the archaeological record. By using previous research, they can view the current project through a larger lens. To find out more about what types of research questions the archaeologists examining this project were asking, visit our virtual exhibit [New Acquisitions](#) and our blog [New Acquisitions: A Closer Look](#) now.

For questions regarding Center collections, please contact the Collections Department by email at collections@sandiegoarchaeology.org.

Local Activities of Interest

BY DANTÉ FARENGA,
DEVELOPMENT & MARKETING DIRECTOR

Looking for an archaeology-related adventure? Check out these events taking place throughout San Diego County this February.

[San Diego County Parks](#) will host the Los Peñasquitos Ranch House Bicentennial Celebration on Saturday, February 11 from 10 AM to 3 PM. Los Peñasquitos Rancho House was the County's first Mexican Land Grant Ranch. Activities will include docent-led tours, ranch activities, an adobe brick-making activity, tractor-drawn rides, period attire displays, kids crafts, historical and archeological presentations, food stands, live music, giveaways, games, and more.

The [California Indian Basketweavers' Association](#) is hosting two days of presentations, demonstrations, and panel discussions on Rekindling Culture and Fire, CIBA's new initiative that promotes the reintroduction and increase of cultural burns to promote safe and healthy traditional gathering areas. Topics include prescribed and cultural fire in Southern California; prescribed burns and gathering policies at the local, state, and federal level; basketweaver demonstrations that emphasize Indigenous land stewardship; and a documentary screening on white sage. The event takes place February 11-12 at the El Corazon Senior Center in Oceanside. You can register for one or both days through [this form](#).

The [San Diego County Archaeological Society](#) will host Aharon Sasson for a presentation on Zooarchaeological Insights on San Diego County Inland-Coastal Relations: An Arctic Sea Duck and Fish From Spring Valley, California on February 28 at 7:30 PM at the Los Peñasquitos Ranch House. Recent excavations at the

prehistoric Kumeyaay village of Neti, located in Spring Valley, yielded nearly 5,500 faunal vertebrae remains. Among the avian remains was the scapula of an eider, an arctic sea duck that rarely migrates south along the Pacific Coast. The site's lying within a half-day foraging range of the coast, the high diversity of fishes and shellfishes, and the presence of the eider scapula suggest the inhabitants of Neti village made frequent foraging trips to shore.

Museum Month



In February, San Diego Museum Month returns with half-price admission to more than sixty museums, historic sites, gardens, aquariums, and other cultural destinations throughout San Diego County. You can find something for everyone's interests, including visual art and design, children and families, science and nature, history, wildlife, military, transportation, music, and cultural heritage.

Museum Month passes are available now at over seventy-five local libraries. Each pass offers four half-priced admissions and can be used to visit as many museums as you like throughout the month. More information, including a list of participating museums, can be found on the [San Diego Museum Council website](#).

Museum Month is presented by the San Diego Museum Council and First 5 San Diego.

IN APPRECIATION

We are grateful for the time and talents, membership, donations, and in-kind support we received from 10/1/22 to 12/31/22.

Thank You for Your Donations

Anonymous	Betsy Pain
Barbara Atkisson	PanGIS, Inc.
Joseph Ball	Pfizer Foundation
Jeanne & Jim Bonk, III	Oscar & Peggy Quinones
Cheryl Bowden-Renna	Raytheon Technologies
Ana Brill	Minna & Michael Riber
Charles Bullard	Mary Robbins-Wade
Karen Crawford	Marty Rosen
Tamara Fogg	Jim Royle
Dr. G. Timothy Gross	Don & Lety Salom
Stuart Harvey	Stephanie Sandoval
Susan Hector & Michael Sampson	Gerald Shiller
Ken Hedges & Diane Hamman	Jon Spenard
ICF International	Oscar Teel
Christopher Khoury	Donald & Mary Anne Thacker
Bill Mahler	Mike Thacker
Joanna & Patrick Masters	Chris Vedborg
Patricia Masters	Gayle White
Sharon Nagaran	Steven Whitecotton
Lauren Otsuki & Chris Blake	Timothy Wolfe

Thank You to Our Volunteers and Interns

Olivia Benchetrit
Chris Blake
Ana Brill
Ciara Chevannes
Linda Coulson
Grace Dearborn
Will Gallegos
David Gauss
Bailey Jagers
Keith Klipfel
Steve Lambert
Adriana Means
Meagan McCarthy
Ajeng McCunney
Kristina Moore
Adam Niesley
Chris O'Connor
JP Oliveria
Madison Power
Alysa Ransom
Mari Ridenour
Jim Royle
Kathy Russell
Heidi Scarlett
James Sinclair
Jordan Smith
Carol Smock
Miranda Valdez-Heredia
Eric Walker
Jordan Wardle

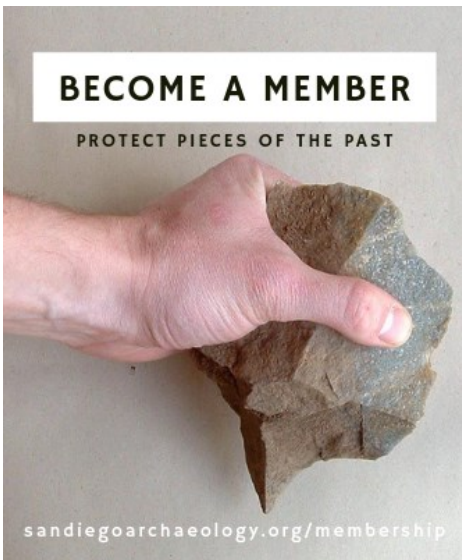
Thank You to Our Purveyors of the Past Monthly Donors

Susie Arter
Karen Crawford
Kathy Dickey
James Eighmey
Susan Gilliland
Dr. G. Timothy Gross
Marty Rosen
Cindy Stankowski
Maureen Steiner



Commission for
Arts and Culture



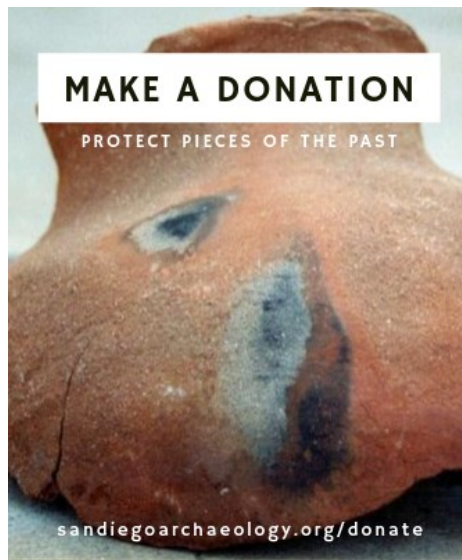


BECOME A MEMBER

PROTECT PIECES OF THE PAST

sandiegoarchaeology.org/membership

The Center is the only local organization dedicated to the collection, study, curation and exhibition of San Diego County's archaeological artifacts. Your membership helps save our history and heritage. **Membership** can be purchased [online](#), over the phone, or by mail.

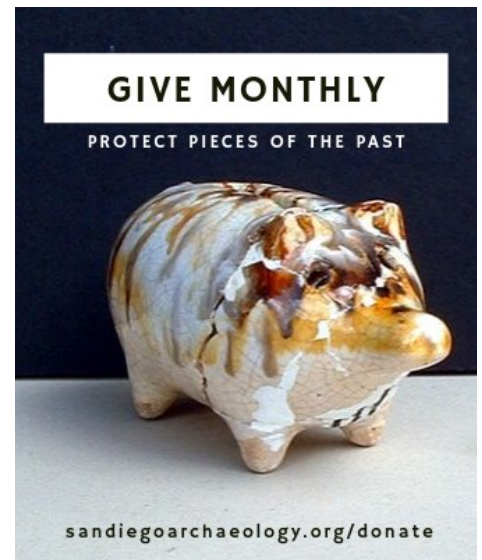


MAKE A DONATION

PROTECT PIECES OF THE PAST

sandiegoarchaeology.org/donate

Cash donations may be made to the Center by visiting our [website](#), or with a check made to the San Diego Archaeological Center. **In-kind gifts** are contributions of goods or services to our organization. Please [contact us](#) if you would like to make this type of donation.

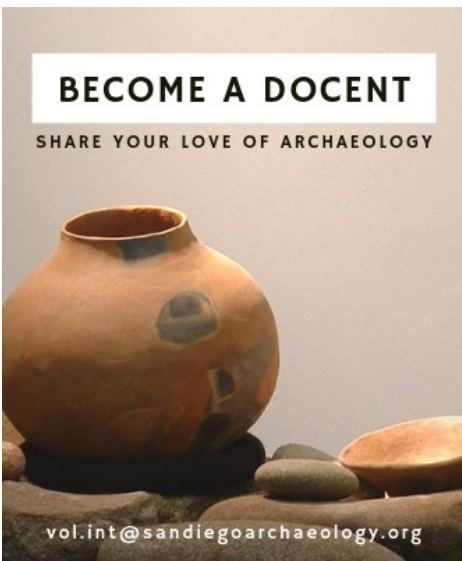


GIVE MONTHLY

PROTECT PIECES OF THE PAST

sandiegoarchaeology.org/donate

Purveyors of the Past Monthly Donation Program is an easy and convenient way of supporting the many important projects at the Center. You may determine the amount to donate per month and the specific campaign, project, or program to fund. Please [contact us](#) for more information.



BECOME A DOCENT

SHARE YOUR LOVE OF ARCHAEOLOGY

vol.int@sandiegoarchaeology.org

Docents welcome visitors and answer general questions regarding the Center and exhibits. Hours are flexible. To apply for a volunteer position or for more information, please email vol.intern@sandiegoarchaeology.org.

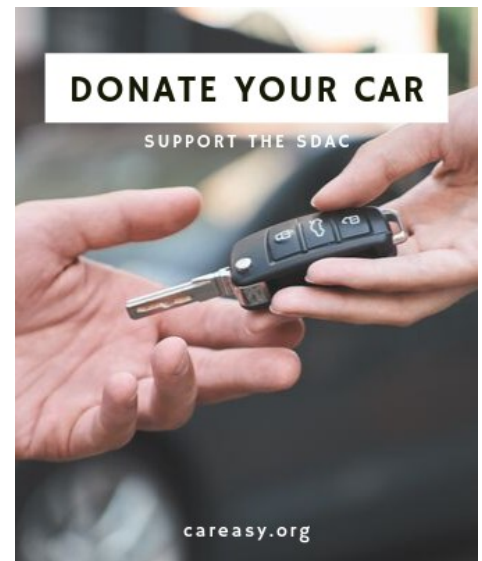


SHOP AMAZONSMILE

SUPPORT THE SDAC

smile.amazon.com

AmazonSmile lets customers enjoy the same wide selection, prices, and convenience as shopping as Amazon.com. When you [shop on AmazonSmile](#), the AmazonSmile Foundation will donate 0.5% of the purchase price to the Center.



DONATE YOUR CAR

SUPPORT THE SDAC

careasy.org

Purchasing a new car or truck this year? **Donate your old vehicle** to benefit the Center through the [C.A.R.S.](#) program. Your generous gift is tax-deductible and will support the Center's exhibitions, programs, and curatorial efforts.



San Diego Archaeological Center

MUSEUM • EDUCATION • RESEARCH

CONTACT US

16666 San Pasqual Valley Road
Escondido, CA 92027
760-291-0370
sandiegoarchaeology.org

FOLLOW US

Facebook: [@SDArchCenter](https://www.facebook.com/SDArchCenter)
Twitter: [@sdac](https://twitter.com/sdac)
Instagram: [@sandiegoarchcenter](https://www.instagram.com/sandiegoarchcenter)
YouTube: [San Diego Archaeological Center](https://www.youtube.com/San Diego Archaeological Center)



MARKETING

Every effort has been made to ensure the accuracy of the information in this e-newsletter. For corrections, please contact the editor, Danté Farenga, at dfarenga@sandiegoarchaeology.org.



BOARD OF TRUSTEES

G. Timothy Gross, Ph.D. - President
Brian Williams, M.M.A., RPA - Vice President
Jim Royle - Secretary
Teodora Podesta, M.A. - Treasurer
Cheryl Bowden-Renna
Ana Brill, M.S.
James Eighmey, M.A.
Bailey Jagers
Stephen F. Lambert
Betsy Pain, M.A.
Jon Spenard, Ph.D.
Michael Thacker

ADVISORY COUNCIL

Bruce Gallagher, Esq., Chair
Michael G. Baksh, Ph.D.
Stan Berryman, Ph.D.
James Bonk, III, CPA
Dennis Gallegos
Philip Goscienski, M.D.
Maureen Steiner, Esq.
Marsha Tepner

STAFF

Stephanie Sandoval, M.A. - Executive Director
Vanessa Chappins - Public Archaeology Coordinator
Danté Farenga - Development & Marketing Director
Jessica McPheters, M.A. - Collections Manager
Suzanne Moramarco - Collections & Library Technician

